



# Brainy's Articles on BullCharts

Article No:  
**BC-10-200**  
page 1 of 4  
30 Apr 2009

## BullScan Manager to “manage” scans

This article is NOT free\*

### Introduction

The BullScan scanning module is a key feature of the BullCharts software product. It allows you to set up one or more stock selection criteria, and to scan through a specific list of stocks to identify only those stocks that match the selection criteria. It is basically a way to “filter” out stocks that meet your specific criteria. And don't forget that BullCharts already has more than 120 supplied scans included.

Once you start changing the existing supplied scans, or creating your own, it can be useful to understand how to manage them to make them easier to find and use. It is possible to “classify” them under three different classifications within the BullScan Manager.

In this article in Brainy's series on BullCharts scans (number BC-10-200) we take a look at the BullScan Manager features that can be used to “classify” and file the scans, as well as those features to help you copy, rename, delete and generally manage the collection of scans.

### BullScan Manager

The BullScan Manager is one of the tabbed options within the Security Manager (which itself is now called the Control Panel from BullCharts version 3.8 onwards).

The entire “Control Panel” / “BullScan Manager” window pane is normally docked by default against the right hand side of the BullCharts window. Note the following:

1. You can display/hide the Control Panel using the F8 function key, or the appropriate Tools menu option.
2. To display the BullScan Manager, use the tabs at the bottom of this Control Panel. By default the Scans tab is the second one from the left (see Figure 1) — but you can click on these tabs and drag them into a new sequence.
3. The Control Panel / BullScan Manager Panel can be easily resized. Simply move the mouse cursor onto the left-hand edge of the panel until the cursor changes, then click and drag the edge of the panel.
4. If you undock the Control Panel from the right hand edge of the screen and let it float, you can resize it to look something like the sample screen shot in Figure 2 below. To undock the Control Panel, first make sure it is displayed (use the F8 function key), and then click on the second tab across the bottom, labelled “Scans”. Then click and drag the top shaded header portion of the panel. You can drag it away from the edge of the screen towards the middle of the window. Then you can click and drag any edge of the floating panel to re-size it.



Figure 1: Control Panel - Scans tab.

### Scan “classifications”

Each saved Scan has three different “classifications”:

- Name
- Category
- Author

If you view the BullScan Manager pane as in Figure 2 at right, and click on the “Name” tab, you will notice that all of the 120+ scans are listed in alphabetic order by “Name”. The other two tabs there are “Category”, and “Author”.

But we should look at how this works.

Over the page we take a look at the other groupings, and how the classifications are set for these scans.

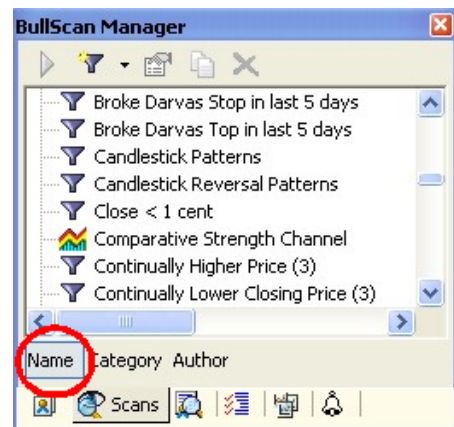


Figure 2: BullScan Manager - classification tabs