



Brainy's Articles on BullCharts

BullScan — key scan features

Article No:
BC-10-120
page 1 of 3
22 Nov 2008
Rev: 30 Apr 09
This article
is NOT free*

Introduction

In this BullCharts article (in Brainy's series on BullCharts) we will make some changes to an existing BullCharts scan to demonstrate some of the key BullScan features.

Stock search criteria (in a bear market)

Let's say you are a longer-term trader wanting to trade long (not short), browsing through weekly charts once each week. And you want to search through all stocks in the S&P/ASX 200 index for a potential price breakout (this is what we might find towards the end of a bear market).

In this example we will start off with Leon Wilson's standard *breakout* scan (discussed in Brainy's article number BC-10-110), and make some changes to search for all stocks that match the following three criteria:

- The share price Close is greater than the 14bar Exponential MA (of the Close).
- The Closing price is between: [the Close of 2 bars ago + 8%], and [the Close of 2 bars ago + 1000%]. This will help to confirm the breakout by waiting to see a sustained increase over 2 weeks.
- We want to see the Bollinger Bands expanding.
- We will ignore volume; but note that we should look for this manually on the chart for confirmation.

A sample chart for a stock that matches this criteria is shown in Figure 1 at right with the downward arrow indicating the “current” candle, and the “2 bars ago” candle indicated by the upward arrow. The percentage increase in price over these 2 weeks is shown as 11.200%. This sample is from the end of the 2003 bear market time frame.

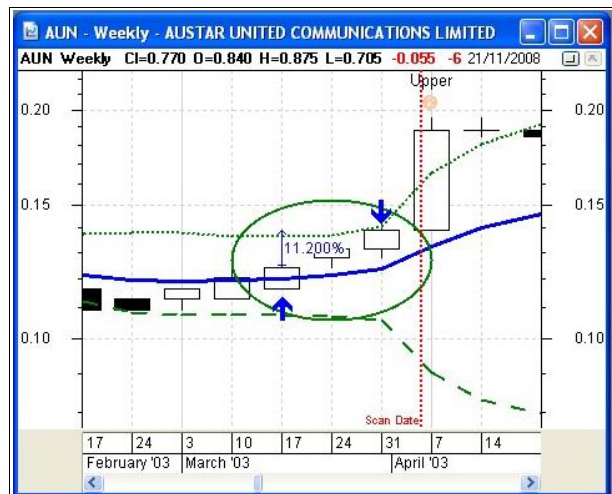


Figure 1: Desired chart pattern

BullCharts BullScan — customising the scan

Let's take a supplied author scan, and make some changes to it, and save it as our own scan for easy future reference. In the BullScan Manager, select Leon Wilson's *Breakout* scan. To help locate it and follow the next few steps, refer to Brainy's article number BC-10-110. In the example depicted in the next pages, I have used the following steps and made the following changes:

- In the BullScan Manager, right-click on the desired scan and choose “Copy” from the drop-down list. Then a copy of the scan definition will open up for changes.
- On the “1. General” tab:
 - Change the “Scan Name” to something very meaningful — for example “Breakout — customised for Brainy's articles”.
 - The “Category” is already shown as “My scans”. This copy feature enables you to easily clone any number of existing scans.
 - In the “Author” field, I have inserted my own name — Brainy.

With these changes made so far, I can easily locate this scan in future by browsing the list of scans either by Category, or by Author (see Figure 2 at right).

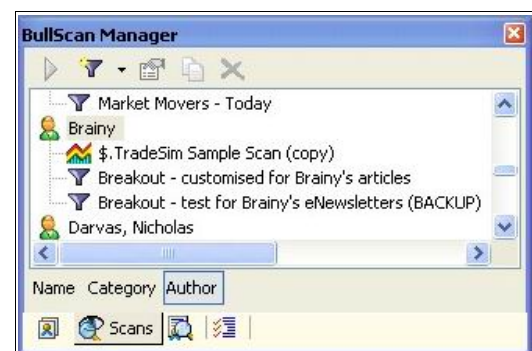


Figure 2: BullScan Manager panel - undocked and floating