



Brainy's Articles on BullCharts

Keyboard shortcut keys

Article No:
BC-05-050
page 1 of 2
31 Mar 2010

This article
is NOT free*

Introduction

As with many software products, within BullCharts there are usually two or more ways to perform specific operations — using a menu option, or a keyboard shortcut, or a Function key, or a mouse operation such as scrolling with the mouse wheel.

This article in Brainy's series on BullCharts (number BC-05-050) provides a list of the useful keyboard shortcut keys and mouse operations. Page 2 overleaf is intended to be a useful ongoing resource, and is designed to be printed and kept beside the computer for ready reference while you work.

The current selection

It is important to note that in BullCharts there are potentially several different window panes or panels that can be displayed at any one time, including:

- One or more *price charts* (which could be “maximised”, or tiled, or simply “arranged”).
- Each *price chart* might have one or more of the following displayed:
 - the *price pane*,
 - the *volume pane*, and
 - one or more *indicator panes*.
- The Control Panel (which comprises the Security Manager, the Scan Manager, the Search tool, Layer Manager, Workspace Manager and Alert Manager).

For a number of the operations listed in the table below, you might need to firstly click the left-hand mouse button once within the desired *chart* or *pane* to make it the *selected* and *current* object.

Selected objects

This note is regarding the various *objects* within *price charts* such as: the price (line, candle, etc.), an indicator, or a drawn object (eg. trend line, trend ruler, text, icon, etc.).

To view and modify the properties of one of these *objects*, or to delete the object, you must first mouse-click on it once to “select” it. Having done that, one or more small boxes (known as handles) will appear on the object.

In the simple candle chart in Figure 1 at right, the dotted trend line is currently “selected”, so two small squares appear — one at each end.

With a number of the BullCharts *chart tools* (eg. swing trendline, parabola, half ellipse, and many others), once you place them on the chart it is possible to adjust them or move them. Simply *select* the object to make the handles appear, and then grab and move one of the handles.

Don't forget, if it is difficult to identify an object or grab it (perhaps you have a cluttered chart with many objects), then you can use the Layer Manager to temporarily hide some or all objects.

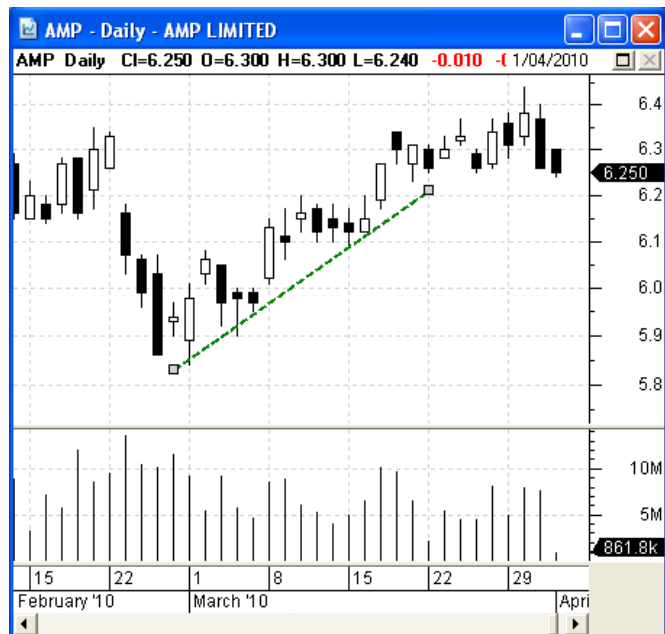


Figure 1: Simple daily candle chart with the dotted trendline “selected”.