



BullCharts BullScan Manager a Tutorial

August 2007 (revised)

(c) Copyright August 2007 - Prepared by Robert Brain for Melbourne BullCharts User Group

1

Discussion Guidelines

- One person to “lead” the discussion (as a facilitator).
- Everyone else is free to contribute to the discussion, including:
 - Their view / understanding of the topic;
 - Any good interpretations of how to use it, especially if they have resulted in a good trade.

2

DISCLAIMER

Any information presented or discussed as a part of this presentation is only opinion, and is not advice, and should not be acted upon.

The particular financial requirements of the viewer have not been taken into consideration.

One should always seek appropriate professional advice before entering into financial or other arrangements.

3

BullScan — Agenda

1. Introduction to BullCharts “scans”
2. What can we “scan” for? - samples
3. The Scan **Definition**
4. The Scan **Criteria**
5. Which securities?
6. Running the Scan
7. Interrupting the Scan
8. Viewing the results
9. Also note:-

4

1. Introduction

BullCharts software can be used to do different types of “scans”:

1. BullScan — To “Scan” through a **specific list** of stocks to find those that **meet certain “criteria”**.
2. Market Scan — To “Scan” through market data for specific fundamental or pricing conditions (including on live data if you subscribe to the live data plan).

(NB: This presentation only covers BullScan, and not the Market Scan capabilities.)

5

First: Quick Demo

- Start BullCharts
- View the BullScan Manager
(menu option: Tools > BullScan Manager; or <F8> key)
- Note the on-screen tabs (at bottom):
 - Name, Category, Author
- Demo the “JB Rising Trend” scan.

(quick demo only - more details follow)

6

2. What can we “scan” for?

Let's view some sample Scans
(ie. BullCharts-supplied Author
Scans), and describe them in English:

1. Jim Berg — “JB Rising Trend”
2. Nicholas Darvas’
“Broke Darvas Top in last 5 days”
3. Alan Hull’s
“Hull Price Volume Breakout - Daily”
4. Stan Weinstein — “Entering Stage 2 from 1”
5. Leon Wilson — “New Highs”

7

Jim Berg — “JB Rising Trend”

Using Jim Berg's strategy, this supplied scan
looks for stocks with a “Rising Trend”,
defined by the following criteria:

- a) If the share price **Close** >
the **34 bar EMA of the Close**;
AND
- b) If the **Close** >
the 34 bar EMA of the Close
of **5 bars ago**.

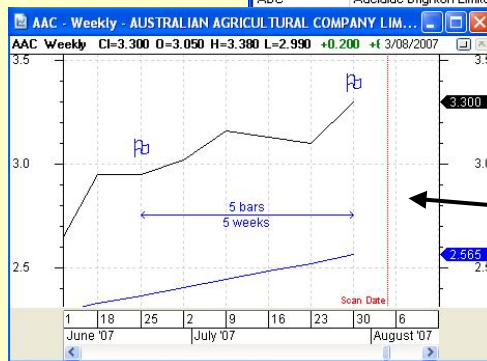
What does the scan result look like?...

8

“JB Rising Trend” scan result

The table of results

Symbol	Name	Close	MA	MA 5 bars ago
AAC	Australian Agricultural Comp...	3.300	2.565	2.366
AAI	Alcoa Inc.	47.000	45.346	44.780
AAR	Anglo Australian Resources ...	0.086	0.081	0.074
AAX	Ausenco Limited	9.170	7.227	6.345
ABC	Adelaide Brighton Limited	3.330	3.286	3.238
ABQ	Allied Brands Limited	0.435	0.345	0.312



Double-click on an entry in the table to produce the price chart (or right-click for drop-down menu).

(more detail next slide...)

9

“JB Rising Trend” scan result

Symbol	Name	Close	MA	MA 5 bars ago
AAC	Australian Agricultural Comp...	3.300	2.565	2.366
AAI	Alcoa Inc.	47.000	45.346	44.780
AAR	Anglo Australian Resources ...	0.086	0.081	0.074
AAX	Ausenco Limited	9.170	7.227	6.345
ABC	Adelaide Brighton Limited	3.330	3.286	3.238
ABQ	Allied Brands Limited	0.435	0.345	0.312

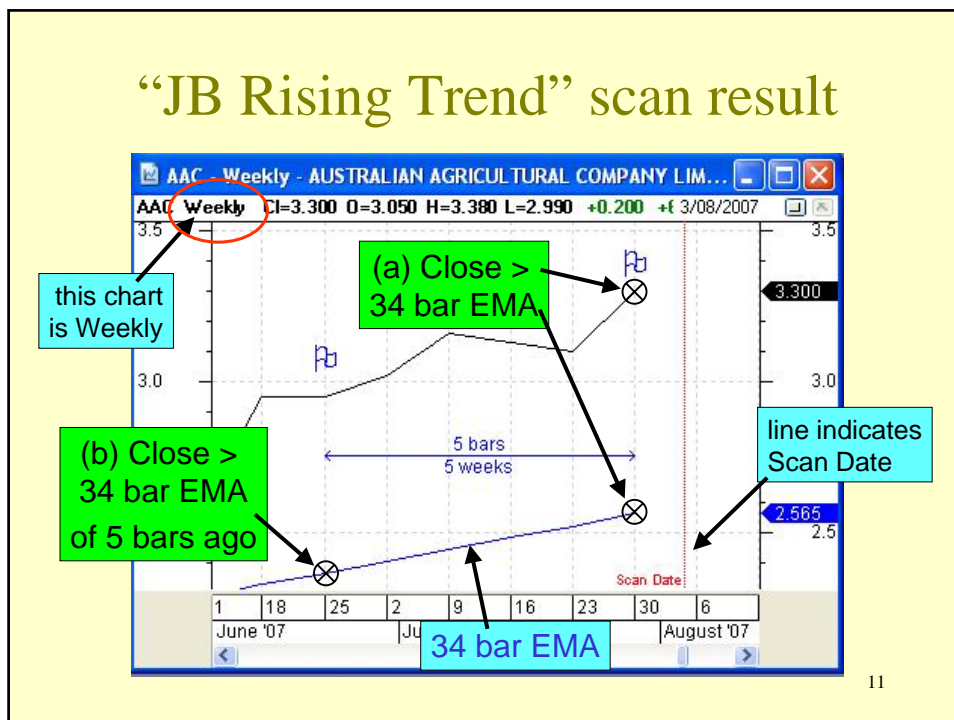
Note the columns in this table vary from scan to scan:

- They are the parameters named in the Scan Criteria
- Close
- MA
- MA of 5 bars ago

(more detail next slide...)

10

“JB Rising Trend” scan result



Nicholas Darvas

“Broke Darvas Top in last 5 days”

Stocks are selected by this supplied scan if:...

- a) If:
- today's High**
 - crosses above**
 - the **Darvas Box “Top Darvas”**, (see BullScan criteria)
 - for **any bar**
 - in the **last 5 bars**;

AND

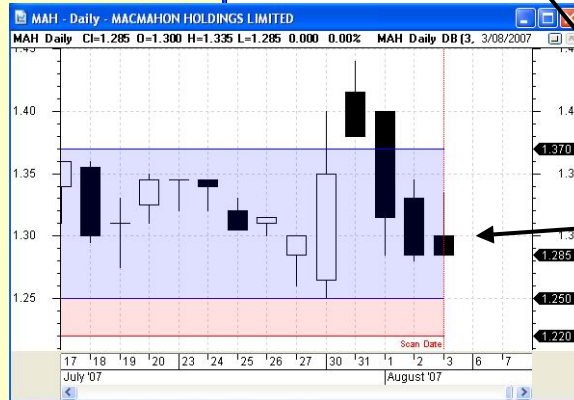
- b) If the **Volume** > **zero** .
- What does the scan result look like?...

12

“Broke Darvas Top in last 5 days”

The table of results

Symbol	Name	High	DB Top Darvas	Volume	Close
LYL	Lycopodium Limited	3.900	3.880	5,767	3.900
MAH	Macmahon Holdings Limited	1.335	1.370	1,499,753	1.285
PwK	Pipe Networks Limited	4.300	4.240	10,844	4.160
VTP	Van Eyk Three Pillars Limited	1.385	1.400	31,354	1.380



Double-click on an entry in the table to produce the chart

(more detail next slide...)
13

“Broke Darvas Top in last 5 days”

The table of results

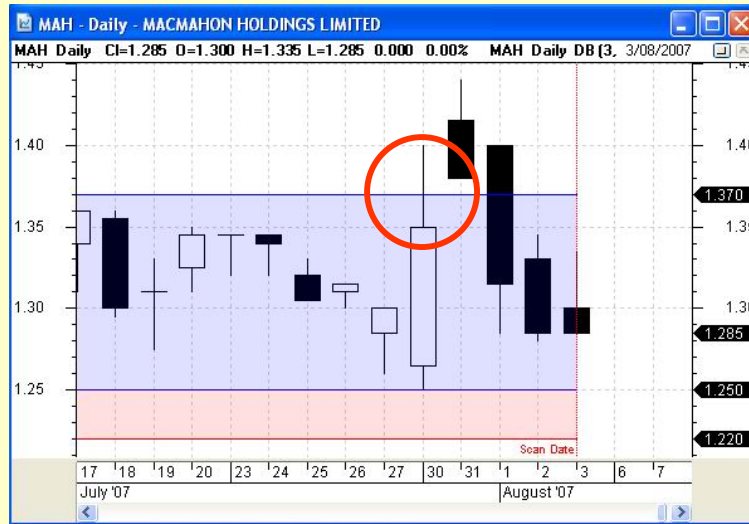
Symbol	Name	High	DB Top Darvas	Volume	Close
LYL	Lycopodium Limited	3.900	3.880	5,767	3.900
MAH	Macmahon Holdings Limited	1.335	1.370	1,499,753	1.285
PwK	Pipe Networks Limited	4.300	4.240	10,844	4.160
VTP	Van Eyk Three Pillars Limited	1.385	1.400	31,354	1.380

Again, note the columns:

- They are the parameters named in the Scan Criteria
- High
- DB Top Darvas
- Volume
- Close

(more detail next slide...)
14

“Broke Darvas Top in last 5 days”



15

Alan Hull

“Hull Price Volume Breakout - Daily”

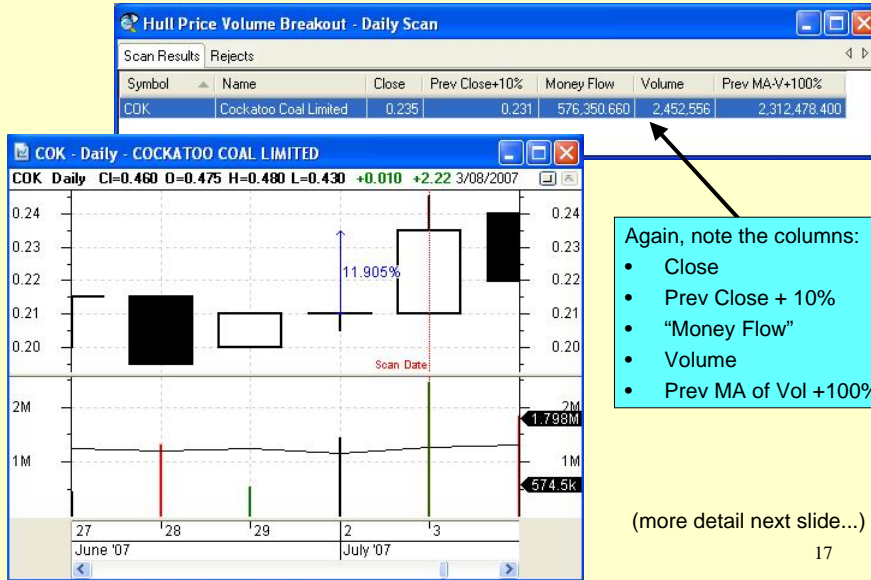
Stocks are selected by this supplied scan if:...

- If the stock **Close** > the **(the previous Close +10%)** ;
AND
- If **“Money Flow”** > **250,000** ;
AND
- If **Volume** > **(the MA of the Volume of the Previous Bar +100%)**.

What does the scan result look like?...

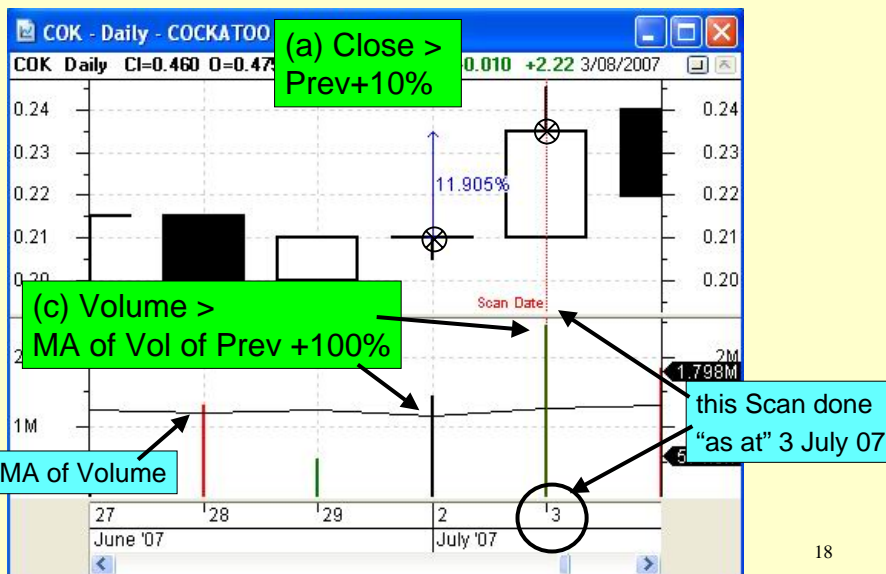
16

“Hull Price Volume Breakout - Daily”



17

“Hull Price Volume Breakout - Daily”



18

Stan Weinstein

“Entering Stage 2 from Stage 1”

Stocks are selected by this supplied scan if:...

- a) If the **“Stage Analysis - Stage 1”** of the **previous bar** is **TRUE**;

AND

- b) If the **“Stage Analysis - Stage 2”** of the **current bar** is **TRUE**

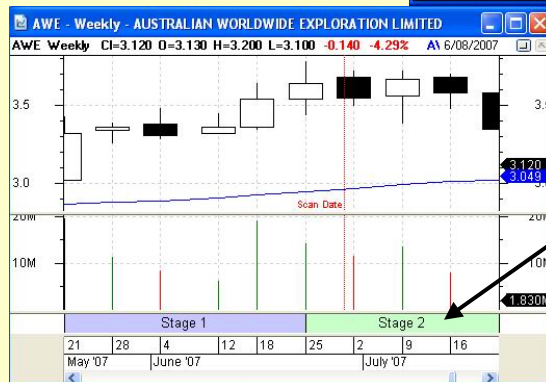
What does the scan result look like?...

19

“Entering Stage 2 from Stage 1”

The table of results

Symbol	Name	MA
AWE	Australian Worldwide Explor...	2.951
CCL	Coca-Cola Amatil Limited	8.604
KAR	Karoo Gas Australia Limited	1.881
PMM	Portman Limited	5.823



the Stan Weinstein Stage Analysis ribbon indicator

this Scan done "as at" 3 July 07

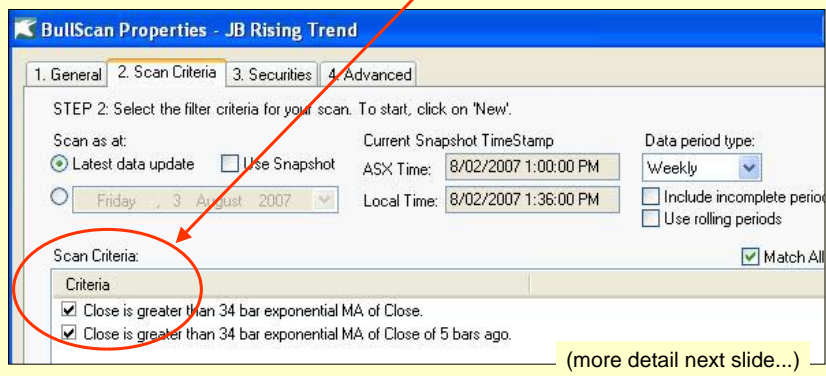
20

3. Scan Definition

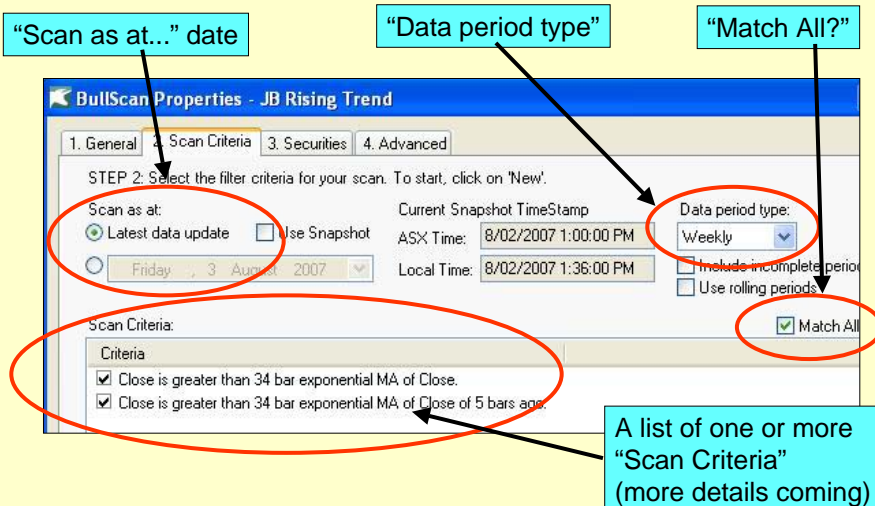
Referring to Jim Berg's "Rising Trend" scan:

- a) If the share price **Close** > the **34 bar EMA of the Close**;
AND
- b) If the **Close** > **the 34 bar EMA of the Close** of **5 bars ago**.

This translates into the two Scan Criteria in the BullScan definition:



Scan Definition — Details



4. Scan Criteria

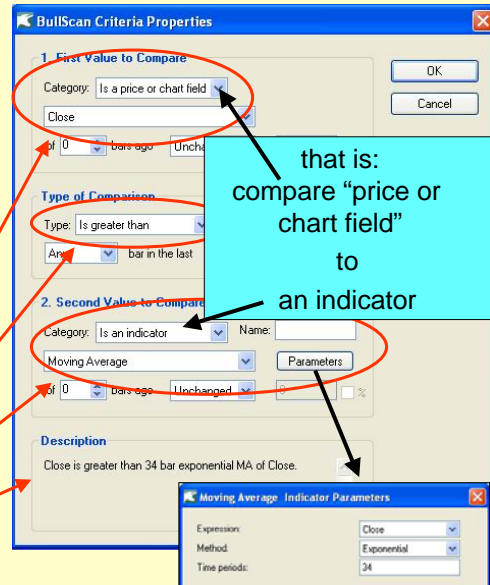
Referring to Jim Berg's "Rising Trend" approach, there are TWO scan criteria.

Here is the first:

1. If the share price **Close** is greater than the **34 bar EMA of the Close**;

Note:

- "First Value to Compare"
- "Type of Comparison"
- "Second Value to Compare"
- English "Description"



Note:

IMPORTANT NOTE!



In the "Type of Comparison" parameters:

- if the number of bars is set to 1, then this Any/Every drop-down is ignored

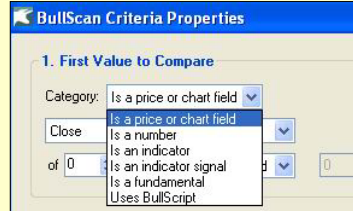
(refer to BullChart User Guide, Ch 10).

So don't let this confuse you.

Scan Criteria — Values to Compare

What “values can be compared”?

- Price
- Chart Field
- Numeric value
- Technical Indicator
- Indicator Signal
- Fundamental value
- BullScript (that you enter)



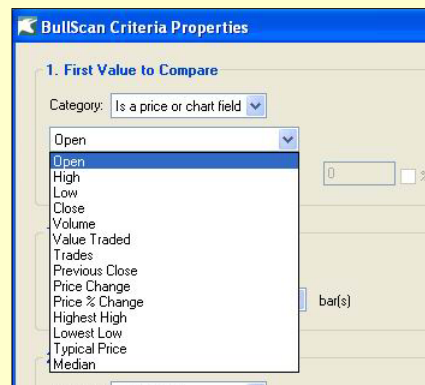
(more detail next slides...)

25

Scan Criteria — Values to Compare

Price or Chart Field

- there are 14 to choose from

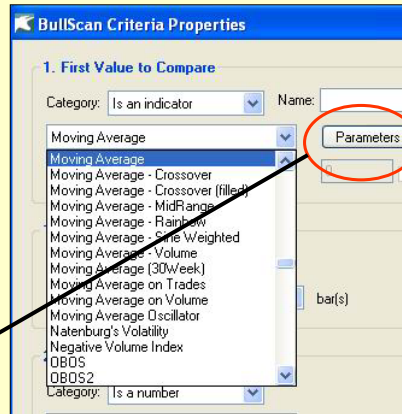
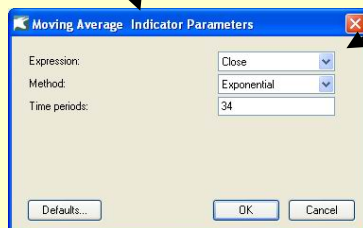


26

Scan Criteria — Values to Compare

Indicator

- many to choose from
- can specify Parameters

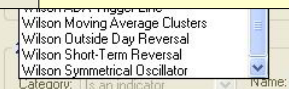
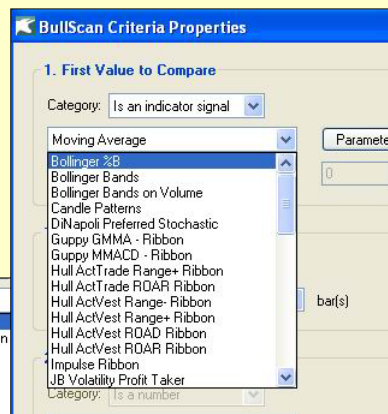
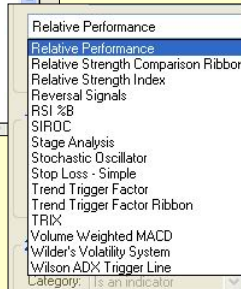
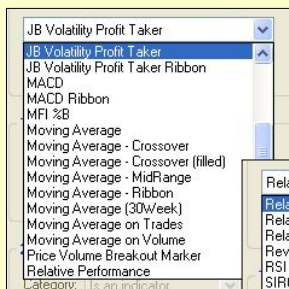


27

Scan Criteria — Values to Compare

Indicator Signal

- 47 to choose from

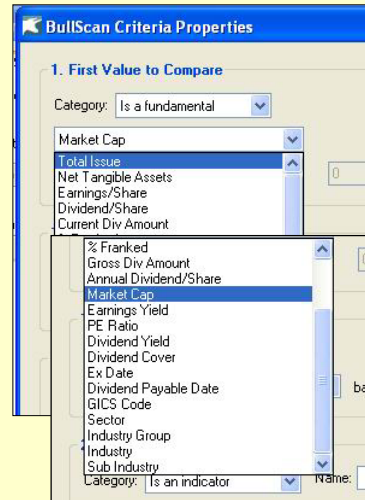


28

Scan Criteria — Values to Compare

Fundamentals

- 20 to choose from

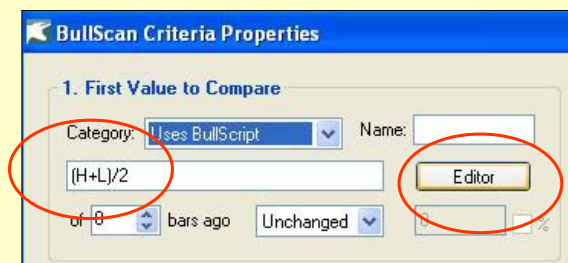


29

Scan Criteria — Values to Compare

Uses BullScript

- BullScript Editor is available
(but not covered in this presentation).

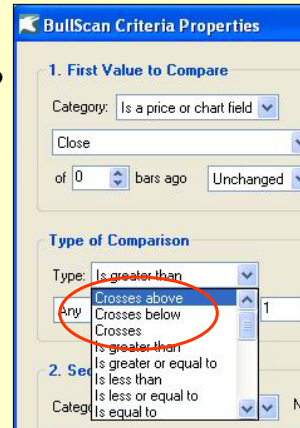
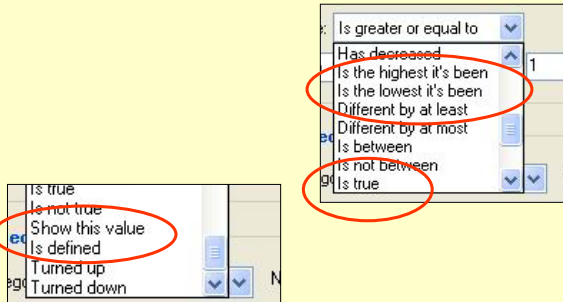


30

Scan Criteria — Comparison Type?

When we compare 2 values,
what type of “comparisons”?

- Crosses above/below
- Is greater than...
- Has increased...



31

Which securities?

Select a “watchlist”, or group of securities:

1. Specify and use the
“Default Scan Group”

(in Security Manager - right-click on the desired Watchlist and choose “Default Scan Group” from the drop down; and this Watchlist is shown **bolded** in Security Manager)

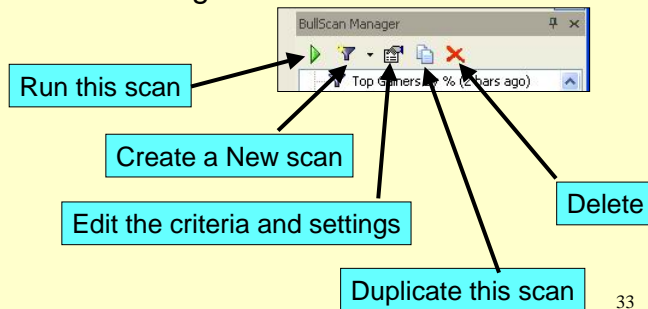
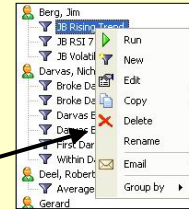
OR

2. In the Scan Definition
use the “Securities” tab
to locate and specify one or more.

32

Running the Scan

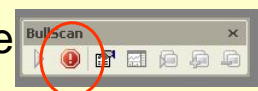
- For an “open” scan, use the “Apply and Run” button.
- For a Scan in the Scan Manager list.
 - right-click for drop-down menu; OR
 - use the Scan Manager Toolbar.



33

Interrupting the Scan

- A separate toolbar is displayed — “BullScan”
- The “stop” button is available when a scan is running.
- Can “Edit” the scan Properties; and Run again.



34

Viewing the results

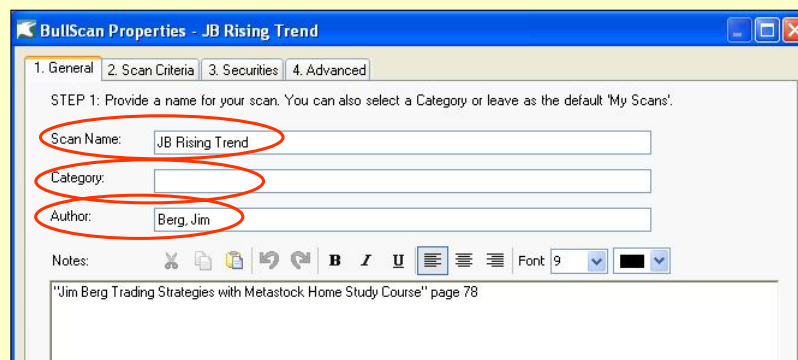
- Double-click on any table line to create a Price Chart, or click on “Create...chart” button.
- On the BullScan toolbar, click on “flip through results”.
- The Slide Show starts, and the BullScan toolbar changes.
- Click on the “+” or “-” buttons to speed up or slow down; or the “flip” button to stop the slide show.



35

Also note

- Scan “Name”, “Category”, and “Author”
- These values determine the placement in the BullScan Manager list (see).



Also note

Sequence of securities in the Result Table:

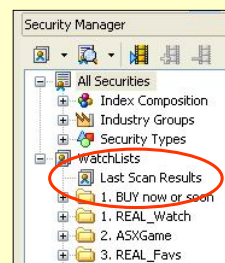
- The little triangle indicates which column is sorted in alpha order.
- Click on this column header to reverse the sequence.
- Or click on another column to sort that column.



Symbol	Name	Close	MA	MA 5 bars ago
AAC	Australian Agricultural Comp...	3.300	2.565	2.966
AAI	Alcoa Inc.	47.000	45.346	44.780
AAR	Anglo Australian Resources ...	0.086	0.081	0.074
AAX	Ausenco Limited	9.170	7.227	6.345
ABC	Adelaide Brighton Limited	3.330	3.286	3.238
ABQ	Allied Brands Limited	0.435	0.345	0.312

Also note (more)

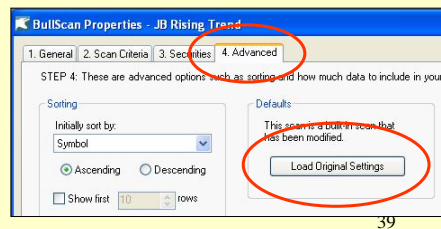
- After running a scan, the list of selected stocks is automatically saved in a Watchlist called “Last Scan Results”.
- This Watchlist can be renamed (to keep it).
- It can be dragged and dropped into a Watchlist folder.



38

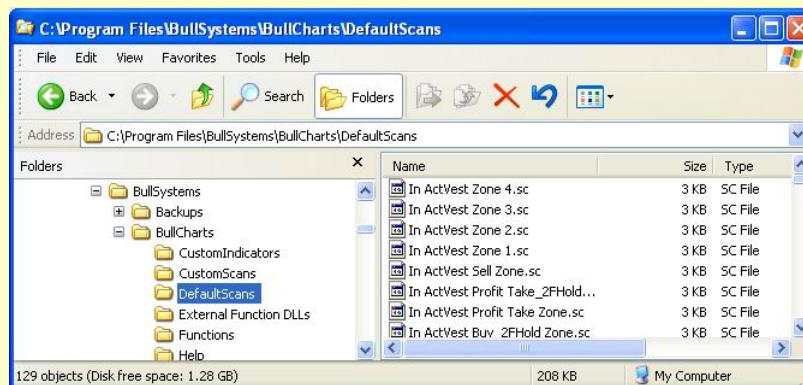
Also note (more)

- If you make changes to a supplied Scan, and then “Apply and Run”, then the changes are saved until next time.
- To reinstate the Scan to the default settings, go to the “Advanced” tab and click on the “Load Original Settings” button.
- If no changes have been made, then this button is greyed out and not available to click.



Also note (more)

- Each Scan Definition is one text file stored on your hard drive (in XML format).
- So, it can be copied, emailed to others, etc.



Advanced Criteria Topics

Modifying the Value to Compare:



- “of 0 bars ago”;
- “Unchanged”, or plus or minus, etc.;
- modify by a “value” (an amount);
- indicate whether percent or not.

41

More Advanced Topics

“Multiple Scans”

- Run one scan, and then use the resultant list of stocks as “input” into another scan.

More Help?

- The “BullCharts User Guide” is stored as PDF in:
C:\Program Files\BullCharts\....

42

Summary

- BullScan Manager and scans.
- Very powerful; but
- basic scans are easy to create and modify; and
- more can be done.

- (eg. BullScript in scans - not covered here)

43

Further comments
or
observations?

44