

# TradeSim - Introduction

**TradeSim**  
for back-testing in BullCharts

**Introduction**  
June 2018  
Robert Brain

(c) 1

---

---

---

---

---

---

---

---

**Disclaimer**

Any information presented or discussed is only opinion, and is NOT ADVICE, and it should not be acted upon.

The particular financial needs of any individual have not been taken into consideration.

One should always seek professional advice before entering into financial or other arrangements.

(c) Copyright 2018, Robert B Brain 2

---

---

---

---

---

---

---

---

**AGENDA**

- TradeSim — what is it?
- How does it work?
- Overview of the process
- TradeSim scan — the special type of BullCharts scan
- How do we do it?
  - Create or modify a TradeSim scan
  - Set Trade Parameters
  - Run a Simulation
  - View the results

(c) Copyright 2018, Robert B Brain 3

---

---

---

---

---

---

---

---

## TradeSim – What is it?

- Software package
- A “plug-in” for BullCharts (& MetaStock)
- For back-testing, to test **your own trading strategy** on a **particular group of stocks** within a **specific time period**.

(c) Copyright 2018, Robert B Brain

4

---

---

---

---

---

---

---

---

## How does it work?

- In BullCharts, create a special “TradeSim” scan.  
Note the symbol in Scan Manager:



- Specify:
  - Your trading strategy criteria (entry, exit)
  - Testing time period (“from” and “to” dates)
  - A watchlist of stocks to scan through

(c) Copyright 2018, Robert B Brain

5

---

---

---

---

---

---

---

---

## How does it work?

- Run the BullCharts scan to identify the possible buy and sell transactions
- Check the results in TradeSim
- Specify “Trade Parameters” (eg. starting capital, position size, etc.)
- Run a TradeSim “Simulation”

(c) Copyright 2018, Robert B Brain

6

---

---

---

---

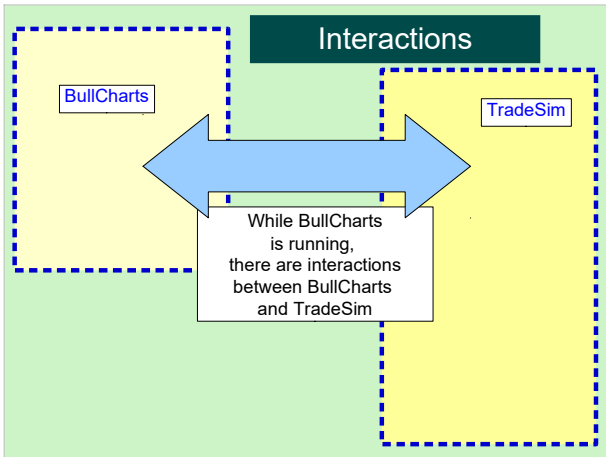
---

---

---

---

# TradeSim - Introduction



---

---

---

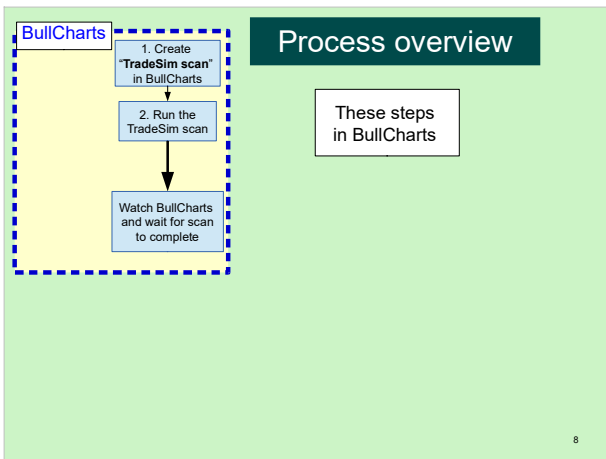
---

---

---

---

---



---

---

---

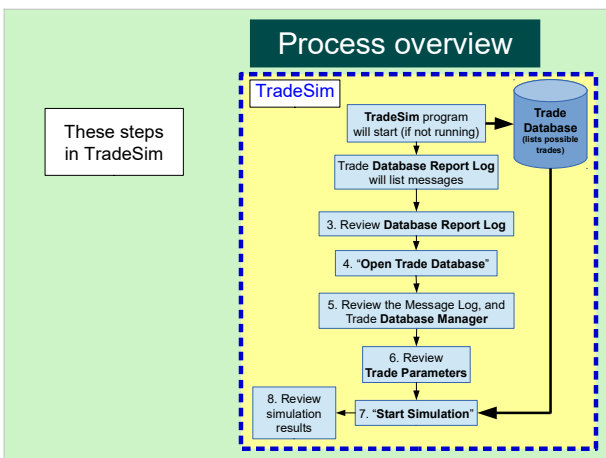
---

---

---

---

---



---

---

---

---

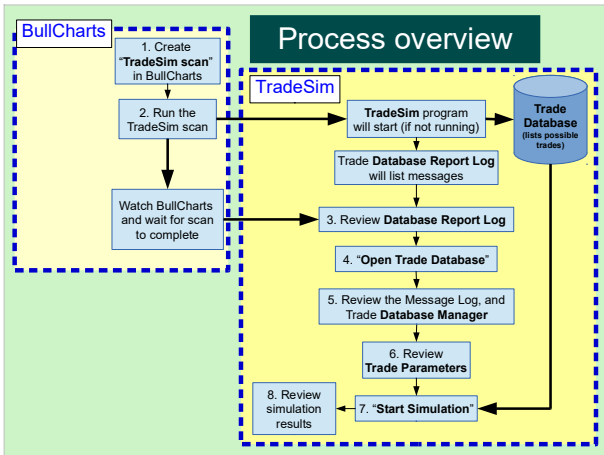
---

---

---

---

# TradeSim - Introduction




---

---

---

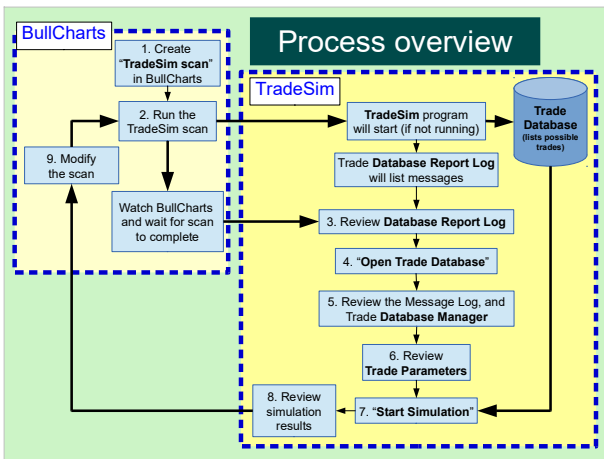
---

---

---

---

---




---

---

---

---

---

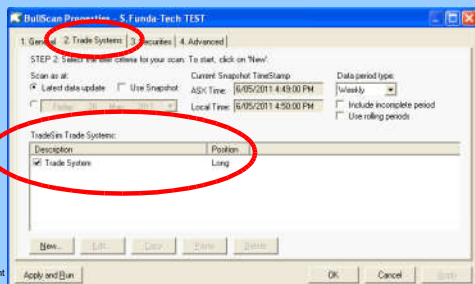
---

---

---

## 1. BullCharts TradeSim Scan

The familiar BullScan dialogue, except for:




---

---

---

---

---

---

---

---

## 2. Run the TradeSim scan

- In BullCharts run the “TradeSim” scan
- The scan output is a TradeSim “Trade Database” with a list of hypothetical trades.

### CAUTION:

The scan will create a Trade Database file of the same name as the scan (.trb), and it will automatically over-write any existing Trade Database file.

(c) Copyright 2018, Robert B Brain

13

---

---

---

---

---

---

---

---

---

---

## 3. Review Message Log

- Watch BullCharts and wait for the scan to complete (Status Bar at bottom of window)

3% Found 67 from 67.

(otherwise it might appear that nothing is happening)

- Watch TradeSim Status Bar

BUSY / [Total]

- Review the Message Log

(c) Copyright 2018, Robert B Brain



---

---

---

---

---

---

---

---

---

---

## 3. Review Database Report Log

- Review the long list of log messages



(c) Copyright 2018, Robert B Brain

15

---

---

---

---

---

---

---

---

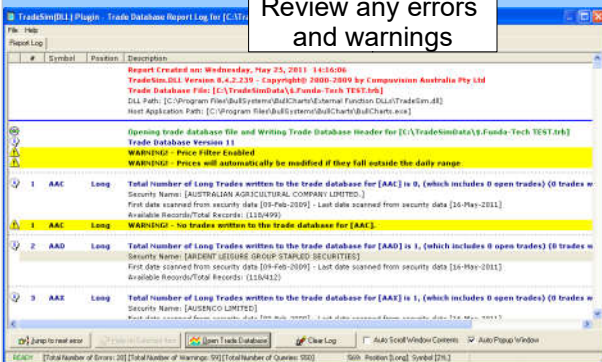
---

---

# TradeSim - Introduction

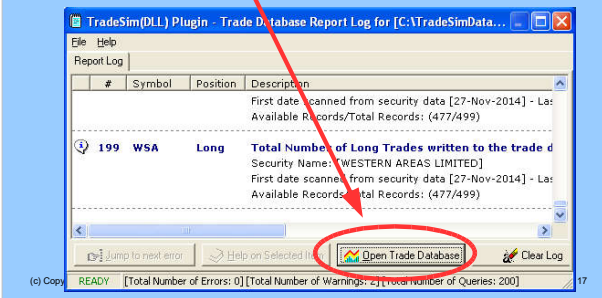
## Review Report Log messages

Review any errors and warnings

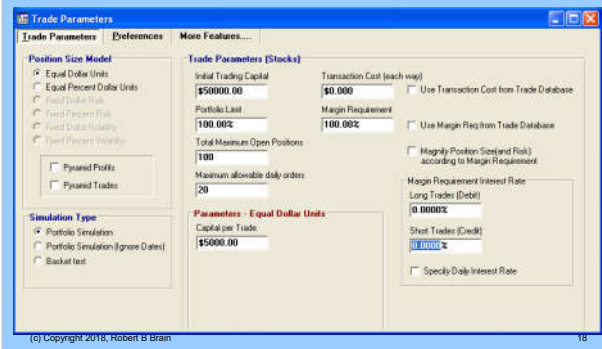


## 4. Open Trade Database

- Open Trade Database

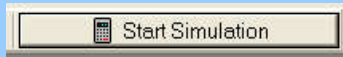


## 5. Review Trade Parameters



# TradeSim - Introduction

## 6. Start Simulation



- Now run a TradeSim “simulation”.
- The result is a number of screens:
  - Trade Database Manager view
  - Trade Simulation report
  - Trade Statistics Table and graphs
  - Various Equity Charts...

(c) Copyright 2018, Robert B Brain

19

## Trade Database

| Trade | Sys ID | Pos  | Symbol | Periodicity | CE  | SBFTE | Entry Date-Time | Exit Date-Time |
|-------|--------|------|--------|-------------|-----|-------|-----------------|----------------|
| 1     | 0      | Long | ADU    | Weekly      | Yes | Yes   | 2/03/2009       | 2/05/2011      |
| 2     | 0      | Long | ALD    | Weekly      | Yes | Yes   | 2/03/2009       | 4/05/2009      |
| 3     | 0      | Long | AMK    | Weekly      | Yes | Yes   | 2/03/2009       | 27/04/2011     |
| 4     | 0      | Long | BDW    | Weekly      | Yes | Yes   | 2/03/2009       | 6/02/2010      |
| 5     | 0      | Long | CCV    | Weekly      | Yes | Yes   | 2/03/2009       | 6/04/2010      |
| 6     | 0      | Long | CHN    | Weekly      | Yes | Yes   | 2/03/2009       | 18/01/2010     |
| 7     | 0      | Long | CUS    | Weekly      | Yes | Yes   | 2/03/2009       | 6/02/2010      |
| 8     | 0      | Long | DNG    | Weekly      | Yes | Yes   | 2/03/2009       | 13/07/2009     |
| 9     | 0      | Long | DOM    | Weekly      | Yes | Yes   | 2/03/2009       | 13/07/2009     |
| 10    | 0      | Long | DRA    | Weekly      | Yes | Yes   | 2/03/2009       | 6/02/2010      |
| 11    | 0      | Long | ERA    | Weekly      | Yes | Yes   | 2/03/2009       | 1/02/2010      |
| 12    | 0      | Long | ESG    | Weekly      | Yes | Yes   | 2/03/2009       | 30/11/2009     |
| 13    | 0      | Long | EKT    | Weekly      | Yes | Yes   | 2/03/2009       | 23/11/2009     |
| 14    | 0      | Long | FXL    | Weekly      | Yes | Yes   | 2/03/2009       | 18/05/2010     |
| 15    | 0      | Long | IAJ    | Weekly      | Yes | Yes   | 2/03/2009       | 23/11/2009     |
| 16    | 0      | Long | ICN    | Weekly      | Yes | Yes   | 2/03/2009       | 2/11/2009      |
| 17    | 0      | Long | KCN    | Weekly      | Yes | Yes   | 2/03/2009       | 1/11/2010      |
| 18    | 0      | Long | MML    | Weekly      | Yes | Yes   | 2/03/2009       | 1/02/2010      |
| 19    | 0      | Long | MMS    | Weekly      | Yes | Yes   | 2/03/2009       | 1/02/2010      |
| 20    | 0      | Long | XAD    | Weekly      | Yes | Yes   | 2/03/2009       | 6/07/2010      |

(c) C

Start Entry Date: 2/03/2009

Stop Entry Date: 26/10/2009

581 trades selected from a total of 58

20

## Trade Simulation Report

| Trade Parameters and Preferences                         |                           |
|--|---------------------------|
| Trade Database Name                                      |                           |
| C:\TradeSim\w\l\Funda-Tech_1997.tbl                      |                           |
| Trade Parameters   |                           |
| Initial Capital:   | \$50,000.00               |
| Portfolio limit:   | 100.00%                   |
| Maximum number of open positions:                        | 100                       |
| Maximum allowable daily orders:                          | 50                        |
| Automatically Use Position Size Model from database:     | No                        |
| Default Position Size Model:                             | Equal Dollar Share        |
| Capital per Trade (if value):                            | \$5,000.00                |
| Pyramid profits:   | No                        |
| Transaction cost (Trade Entry):                          | \$0.00                    |
| Transaction cost (Trade Exit):                           | \$0.00                    |
| Automatically use Margin Requirement from database:      | No                        |
| Margin Requirement:                                      | 100.00%                   |
| Manually Position Size (tick) according to Margin Req:   | No                        |
| Automatically select Position Size Model from database:  | No                        |
| Enable Fractional Trades:                                | No                        |
| Ownership Bid Filter:                                    | No                        |
| Margin Requirement Daily Interest Rate (Long Trades):    | 0.0000%                   |
| Margin Requirement Daily Interest Rate (Short Trades):   | 0.0000%                   |
| Margin Requirement Tightly Interest Rate (Long Trades):  | 0.0000%                   |
| Margin Requirement Tightly Interest Rate (Short Trades): | 0.0000%                   |
| Trade Preferences  |                           |
| Trading Instrument:                                      | Stocks                    |
| Process Open Trades:                                     | Process separately        |
| Trade Position Type:                                     | Process all trades        |
| Entry Order Type:  | Default Order             |
| Exit Order Type:   | Default Order             |
| Minimum Trade Size:                                      | \$0.00                    |
| Accept Partial Trades:                                   | No                        |
| Volume Filter:   | Ignore Volume Information |
| Pyramid Trades:  | No                        |

21

# TradeSim - Introduction

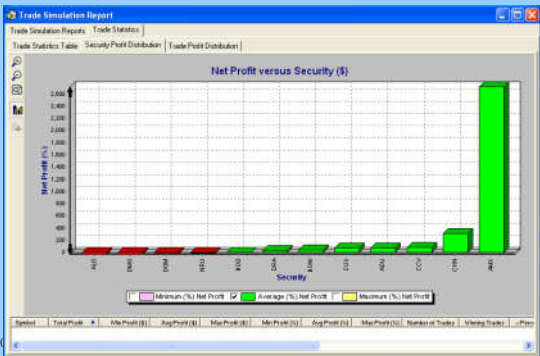
## Trade Statistics Table

| Symbol | Total Profit | Min Profit (\$) | Avg Profit (\$) | Max Profit (\$) | Min Profit (%) | Avg Profit (%) | Max Profit (%) | Number of Trades | Winning Trades | ... |
|--------|--------------|-----------------|-----------------|-----------------|----------------|----------------|----------------|------------------|----------------|-----|
| AMD    | \$1,507.42   | \$1,507.42      | \$1,507.42      | \$1,507.42      | 70.15%         | 70.15%         | 70.15%         | 1                | 1              | 100 |
| AVGO   | \$1,470.93   | \$1,470.93      | \$1,470.93      | \$1,470.93      | 29.81%         | 29.81%         | 29.81%         | 1                | 0              | 0   |
| AVO    | \$136,009.36 | \$136,009.36    | \$136,009.36    | \$136,009.36    | 2720.00%       | 2720.00%       | 2720.00%       | 1                | 1              | 100 |
| AVY    | \$245.06     | \$245.06        | \$245.06        | \$245.06        | 4.91%          | 4.91%          | 4.91%          | 1                | 1              | 100 |
| CCF    | \$2,080.41   | \$2,080.41      | \$2,080.41      | \$2,080.41      | 41.61%         | 41.61%         | 41.61%         | 1                | 1              | 100 |
| CCY    | \$3,994.37   | \$3,994.37      | \$3,994.37      | \$3,994.37      | 79.89%         | 79.89%         | 79.89%         | 1                | 1              | 100 |
| CLM    | \$15,715.36  | \$15,715.36     | \$15,715.36     | \$15,715.36     | 314.30%        | 314.30%        | 314.30%        | 1                | 1              | 100 |
| CLT    | \$3,482.79   | \$3,482.79      | \$3,482.79      | \$3,482.79      | 69.66%         | 69.66%         | 69.66%         | 1                | 1              | 100 |
| CLM    | \$1,249.96   | \$1,249.96      | \$1,249.96      | \$1,249.96      | -25.00%        | -25.00%        | -25.00%        | 1                | 0              | 0   |
| CLM    | \$980.00     | \$980.00        | \$980.00        | \$980.00        | -19.60%        | -19.60%        | -19.60%        | 1                | 0              | 0   |
| CLM    | \$1,833.26   | \$1,833.26      | \$1,833.26      | \$1,833.26      | 36.67%         | 36.67%         | 36.67%         | 1                | 1              | 100 |
| CLM    | \$375.00     | \$375.00        | \$375.00        | \$375.00        | -7.50%         | -7.50%         | -7.50%         | 1                | 0              | 0   |

(c) Copyright 2018, Robert B Brain

22

## Trade Statistics — Security...



23

## Trade Log

| Time | Trade ID | Symbol | Share | Price | Period | Trade Date/Time | P Level | P Con. | Priority Type | Disc. | Quantity | Min Profit   |
|------|----------|--------|-------|-------|--------|-----------------|---------|--------|---------------|-------|----------|--------------|
| 1    | 1        | AMD    | Enter | Long  | Weekly | 20230308        | 0       | 0      | Base          |       | 100      | \$1,507.42   |
| 2    | 2        | AVO    | Enter | Long  | Weekly | 20230308        | 0       | 0      | Base          |       | 100      | \$136,009.36 |
| 3    | 3        | AVO    | Enter | Long  | Weekly | 20230308        | 0       | 0      | Base          |       | 100      | \$245.06     |
| 4    | 4        | CCF    | Enter | Long  | Weekly | 20230308        | 0       | 0      | Base          |       | 100      | \$2,080.41   |
| 5    | 5        | CCY    | Enter | Long  | Weekly | 20230308        | 0       | 0      | Base          |       | 100      | \$3,994.37   |
| 6    | 6        | CLM    | Enter | Long  | Weekly | 20230308        | 0       | 0      | Base          |       | 100      | \$15,715.36  |
| 7    | 7        | CLM    | Enter | Long  | Weekly | 20230308        | 0       | 0      | Base          |       | 100      | \$3,482.79   |
| 8    | 8        | CLM    | Enter | Long  | Weekly | 20230308        | 0       | 0      | Base          |       | 100      | \$1,249.96   |
| 9    | 9        | CLM    | Enter | Long  | Weekly | 20230308        | 0       | 0      | Base          |       | 100      | \$980.00     |
| 10   | 10       | CLM    | Enter | Long  | Weekly | 20230308        | 0       | 0      | Base          |       | 100      | \$1,833.26   |
| 11   | 11       | CLM    | Enter | Long  | Weekly | 20230308        | 0       | 0      | Base          |       | 100      | \$375.00     |
| 12   | 12       | AMD    | Enter | Long  | Weekly | 20230308        | 0       | 0      | Base          |       | 100      | \$1,507.42   |
| 13   | 13       | AVO    | Enter | Long  | Weekly | 20230308        | 0       | 0      | Base          |       | 100      | \$136,009.36 |
| 14   | 14       | AVO    | Enter | Long  | Weekly | 20230308        | 0       | 0      | Base          |       | 100      | \$245.06     |
| 15   | 15       | CCF    | Enter | Long  | Weekly | 20230308        | 0       | 0      | Base          |       | 100      | \$2,080.41   |
| 16   | 16       | CCY    | Enter | Long  | Weekly | 20230308        | 0       | 0      | Base          |       | 100      | \$3,994.37   |
| 17   | 17       | CLM    | Enter | Long  | Weekly | 20230308        | 0       | 0      | Base          |       | 100      | \$15,715.36  |
| 18   | 18       | CLM    | Enter | Long  | Weekly | 20230308        | 0       | 0      | Base          |       | 100      | \$3,482.79   |
| 19   | 19       | CLM    | Enter | Long  | Weekly | 20230308        | 0       | 0      | Base          |       | 100      | \$1,249.96   |
| 20   | 20       | CLM    | Enter | Long  | Weekly | 20230308        | 0       | 0      | Base          |       | 100      | \$980.00     |
| 21   | 21       | CLM    | Enter | Long  | Weekly | 20230308        | 0       | 0      | Base          |       | 100      | \$1,833.26   |
| 22   | 22       | CLM    | Enter | Long  | Weekly | 20230308        | 0       | 0      | Base          |       | 100      | \$375.00     |
| 23   | 23       | AMD    | Enter | Long  | Weekly | 20230308        | 0       | 0      | Base          |       | 100      | \$1,507.42   |



### Equity Chart — Dollars \$



(c) Copyright 2018, Robert B Brain

25

---

---

---

---

---

---

---

---

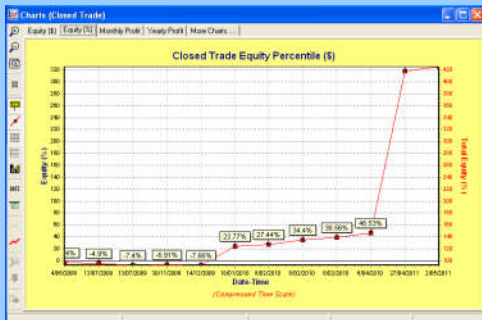
---

---

---

---

### Equity — %



(c) Copyright 2018, Robert B Brain

26

---

---

---

---

---

---

---

---

---

---

---

---

### Warnings

- Your *stock universe* can make a big difference to the results
- The *exit strategy* can make a big difference
- Survivorship bias is not addressed

(c) Copyright 2018, Robert B Brain

27

---

---

---

---

---

---

---

---

---

---

---

---

## More information?

- Tutorial guides (pdf), videos, etc.
- Robert's web site:  
[www.robertbrain.com/bullcharts/](http://www.robertbrain.com/bullcharts/)
- The official web site:  
[www.compuvision.com.au](http://www.compuvision.com.au)
- Pricing\* (time unlimited versions):  
Standard edition — \$198  
Professional edition — \$484  
Enterprise edition — \$1,520

\* pricing as at 2016

(c) Copyright 2018, Robert B Brain

28

---

---

---

---

---

---

---

---

## Questions / Discussions?

(c) Copyright 2018, Robert B Brain

29

---

---

---

---

---

---

---

---

The End

(c) Copyright 2018, Robert B Brain

30

---

---

---

---

---

---

---

---