

BY THE NUMBERS

Des Bleakley - BullCharts User Group

Wed 21th Feb 2018

AGENDA

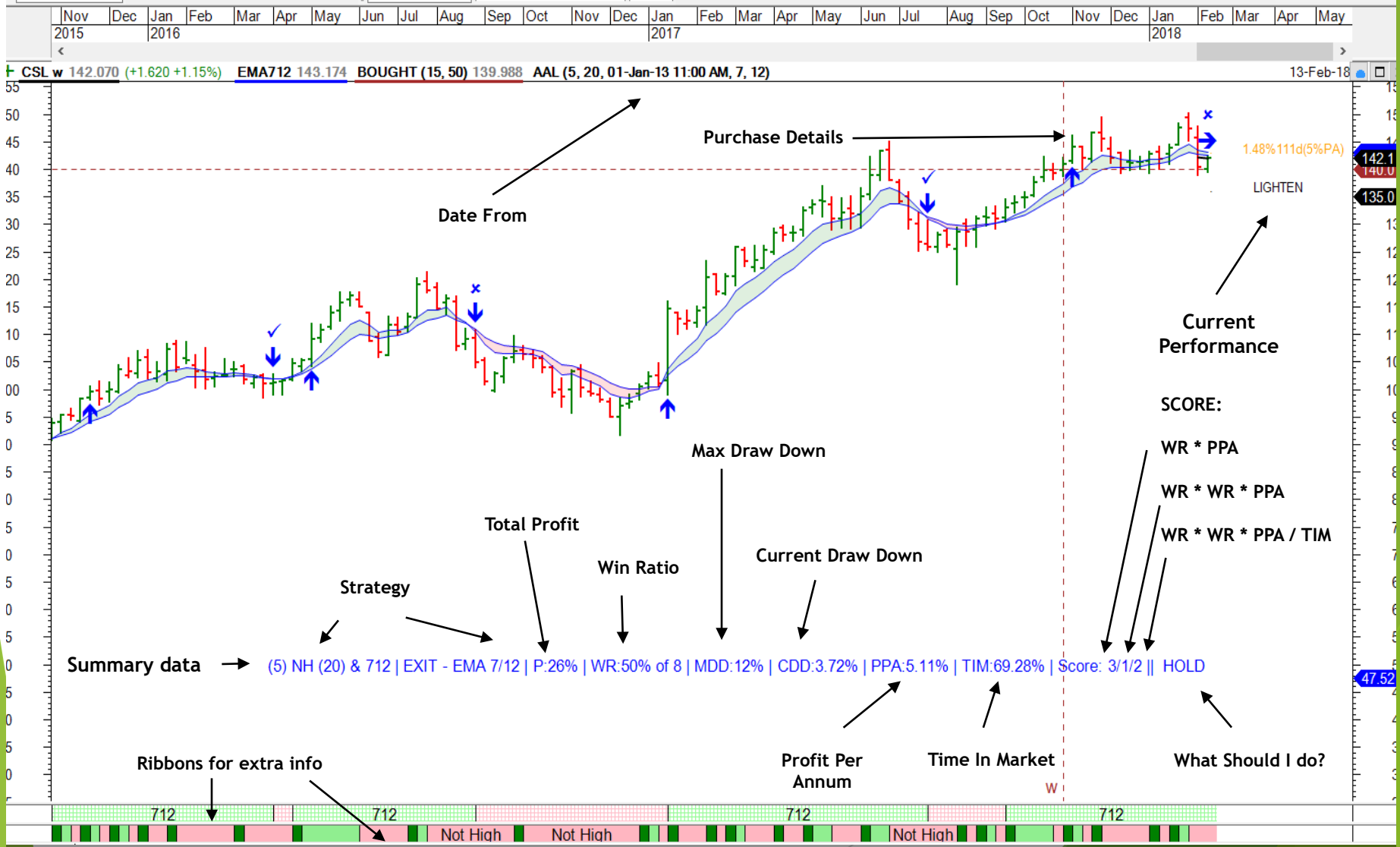
PROFITABLE !

- ▶ Find Strategies to Trade Stocks
- ▶ Minimise Subjectivity where possible
- ▶ Automate - less time / less effort
- ▶ Measurable
- ▶ In practice?
- ▶ Examples & Questions

FINDING STRATEGIES

- ▶ Trend Trading is my preference
- ▶ NIRVANA - Do not search for optimal strategy for all stocks - “Holy Grail”
- ▶ Find OK strategy & select stocks that work within that
- ▶ Do not allow the search for perfection to destroy the good
- ▶ Build on previous strategies
 - ▶ Up trending
 - ▶ New High Entry
 - ▶ MA crossover (7 / 12)
 - ▶ Mix & Match & Compare
 - ▶ Play with parameters

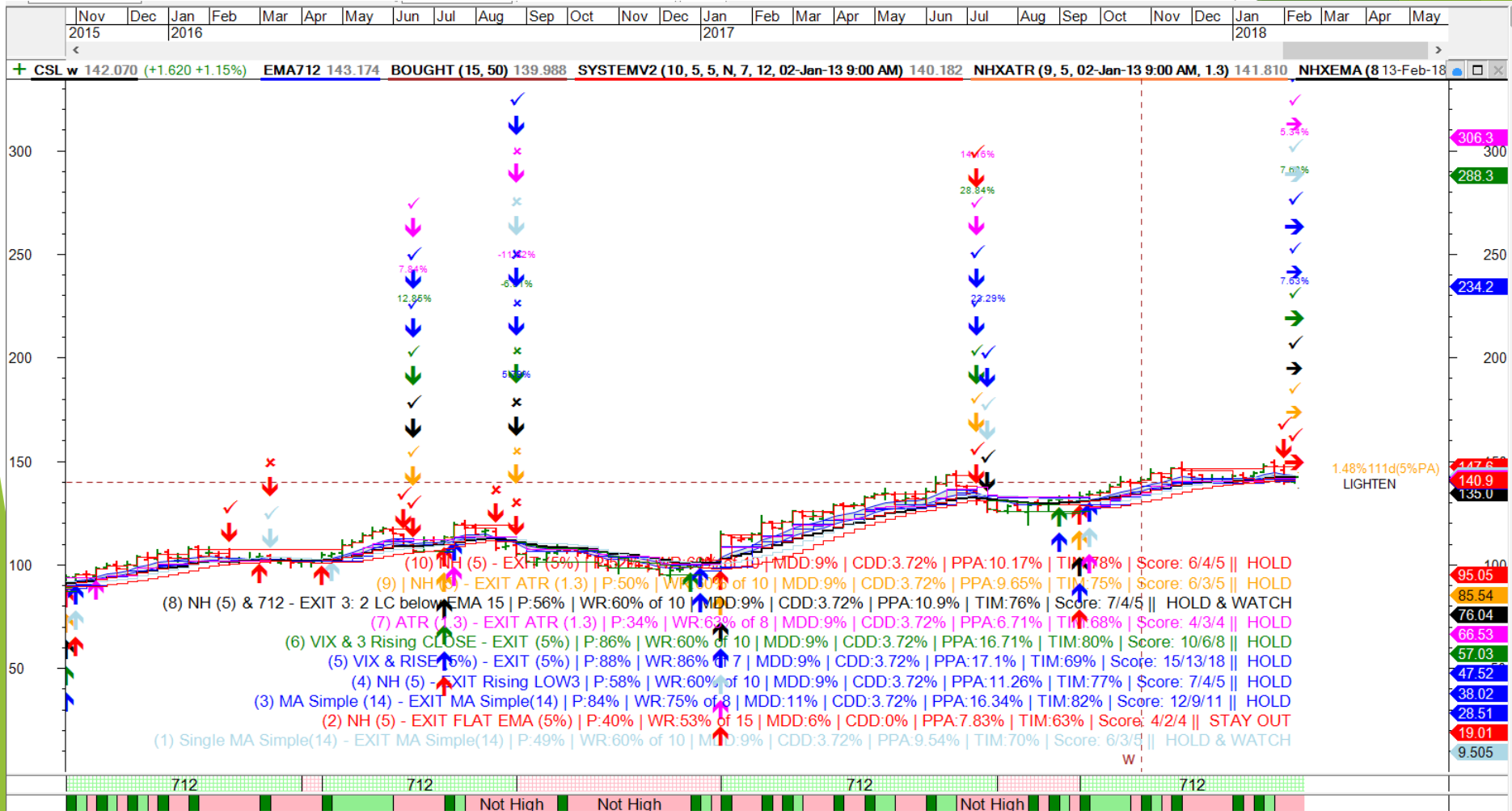
Example - Layout



142.1
140.0
135.0

47.52

Can Get Very Busy!



Principals

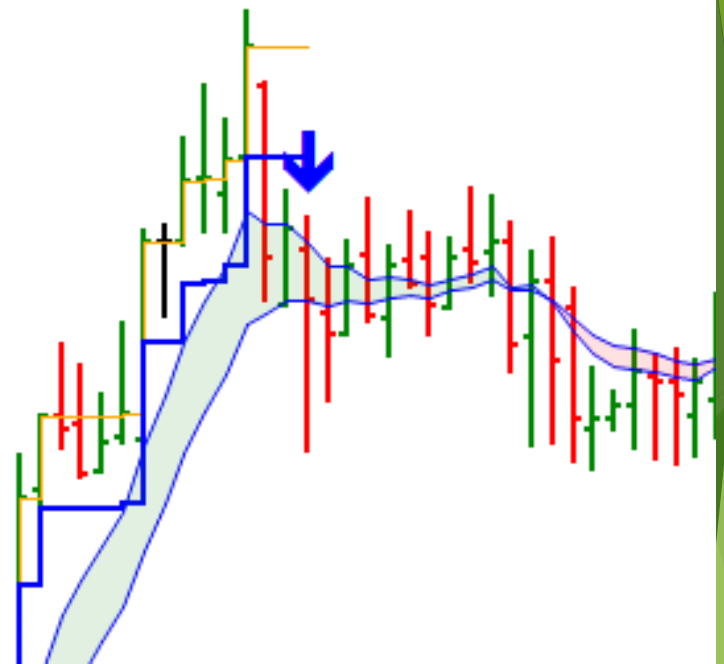
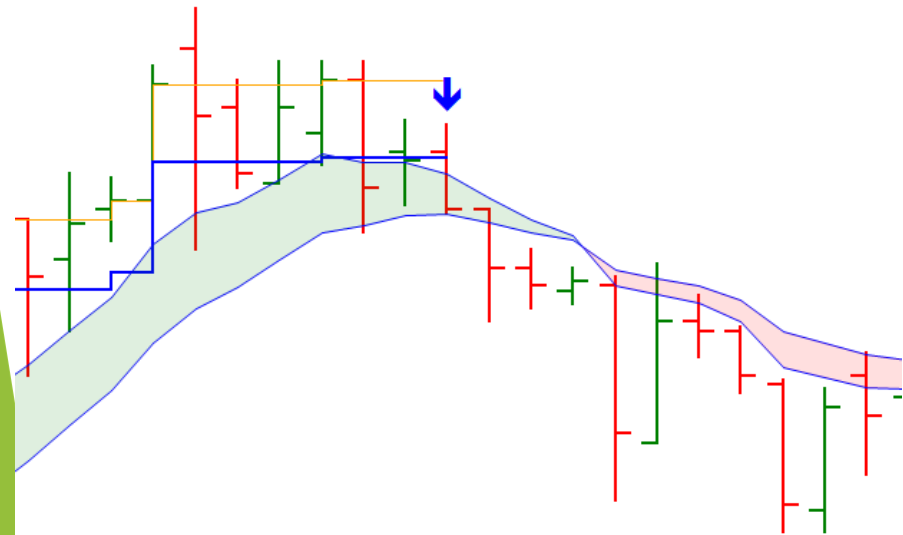
- ▶ Find trending Stocks (WMD)
 - ▶ Monthly 7 on 12 uptrend
 - ▶ Weekly 7 on 12 uptrend
 - ▶ Daily 7 on 12 uptrend
- ▶ Pick a Strategy
- ▶ Plot entry & exit points
- ▶ Calculate statistics
 - ▶ Win / loss rates
 - ▶ Cumulative \$ performance
 - ▶ Draw Down
 - ▶ Time in market
- ▶ Look at the numbers

Better Exits

- ▶ Moving Average Crossovers
 - ▶ Can be later than you like
 - ▶ Often give a lot back
 - ▶ Slow to react on many occasions
- ▶ Limit “give back” pain
- ▶ Use a Trailing Stop Loss
 - ▶ Relative to highest gain
 - ▶ Set stop loss below high point at a percentage you are comfortable with
 - ▶ Two lower stops works much better (IMHO)
 - ▶ If you choose 5% - it really is more like 10%
 - ▶ OR ATR OR Rising Close OR FLAT MA OR . . .

EXITS - MA Crossover is too late

- ▶ 5% TS exits before 7/12 MA



Possible Entry / Exit Methods

▶ ENTRY

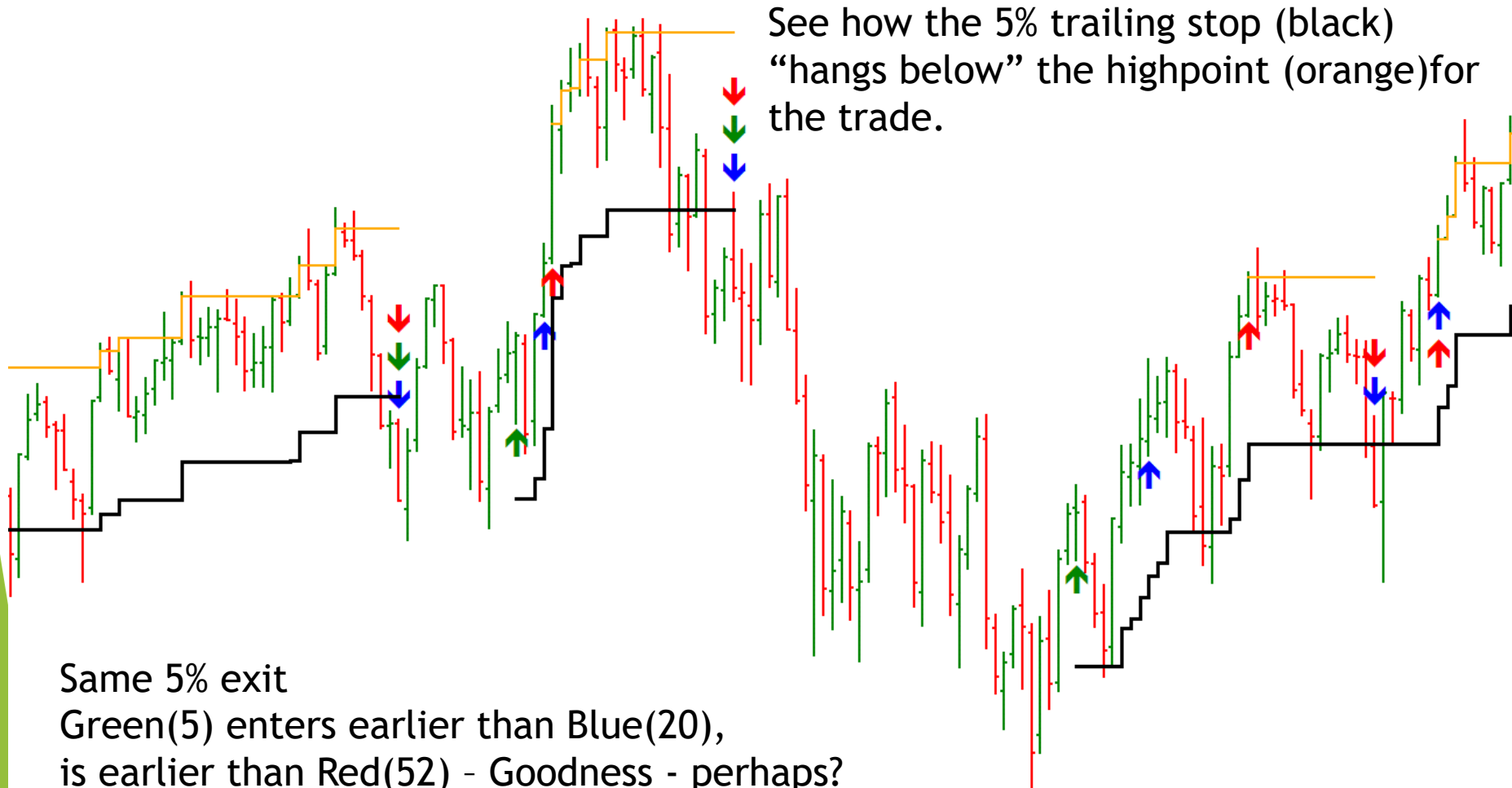
- ▶ New High - which period?
- ▶ Close above a MA - which MA - OHLC?
- ▶ Rising Closes
- ▶ Close above ATR - parameters?
- ▶ Entry filter (VIX) OR HULL OR

▶ EXIT

- ▶ MA Crossover - which ones?
 - ▶ Trailing Stop - Lots to choose - % / ATR / PSAR
 - ▶ How many closes before exit?
 - ▶ MA Flattens - how much & which MA
- ▶ AND ALL POSSIBLE COMBINATIONS

New High Entry 52 / 20 / 5 Weeks

(+44.200 +0.74%) SYSTEM (20, 5, 0, 12, 0, 5) 6,122.3 SYSTEM (5, 5, 0, 12, 0, 5) 6,122.3 SYSTEM (52, 5, 0, 12, 0, 5) 6,122.3



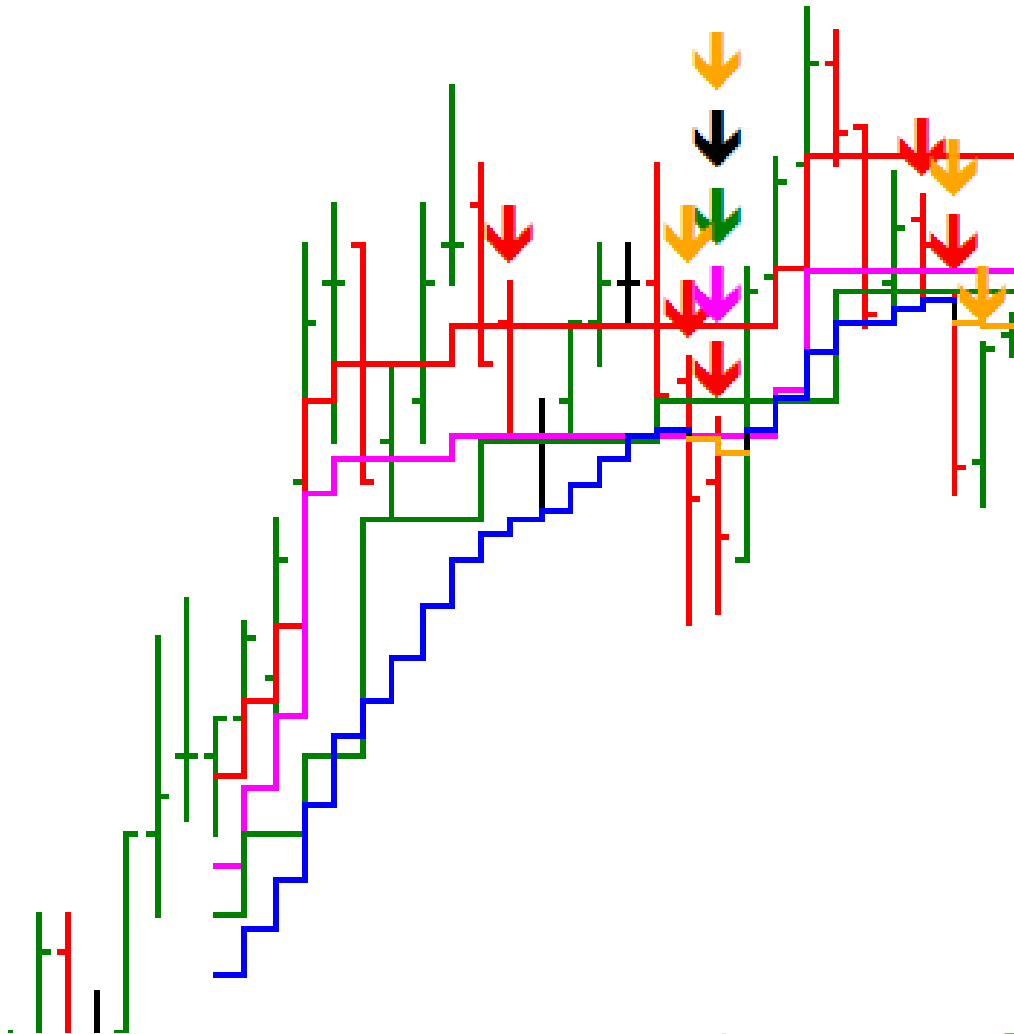
Comparing strategies & stocks?

- ▶ Decide on strategy / strategies
- ▶ How much data to look back upon?
 - ▶ 5 years in these examples
- ▶ Apply & Calculate Profit across trades
 - ▶ Total Profit
 - ▶ Profit Per Annum (PPA)
 - ▶ Time In Trade - (TIM)
- ▶ Win / Loss Ratio
- ▶ Maximum Draw Down
- ▶ Create a Score - which one(s)?
 - ▶ Consider - “sleep factor” x Profit
 - ▶ I like Win Ratio x PPA - TIM useful?
- ▶ Compare the results but beware of tyranny of small numbers

Possible exits?

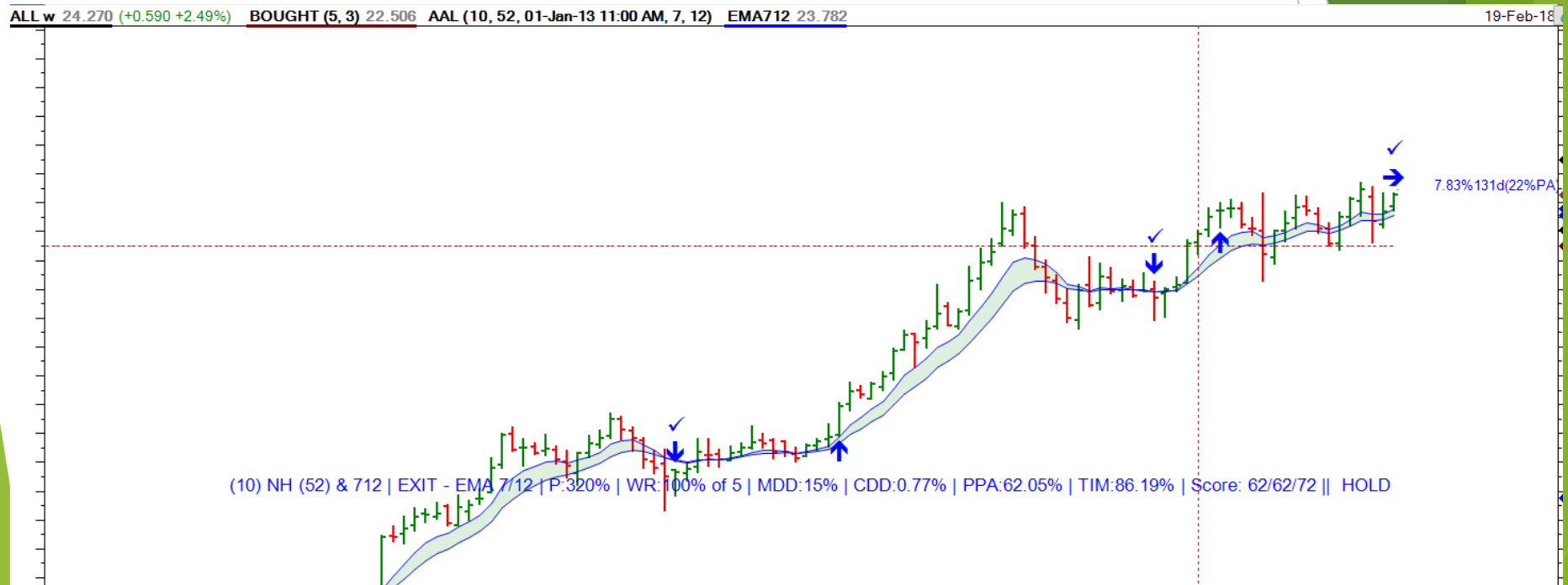
- ▶ Stop Loss - $x\%$
 - ▶ ATR n
 - ▶ MA crossover
 - ▶ Close below MA
 - ▶ Flat EMA
 - ▶ Rising Low stop
 - ▶ Effect on draw Down
- ▶ Let's have a look

Trailing Stops - how different?



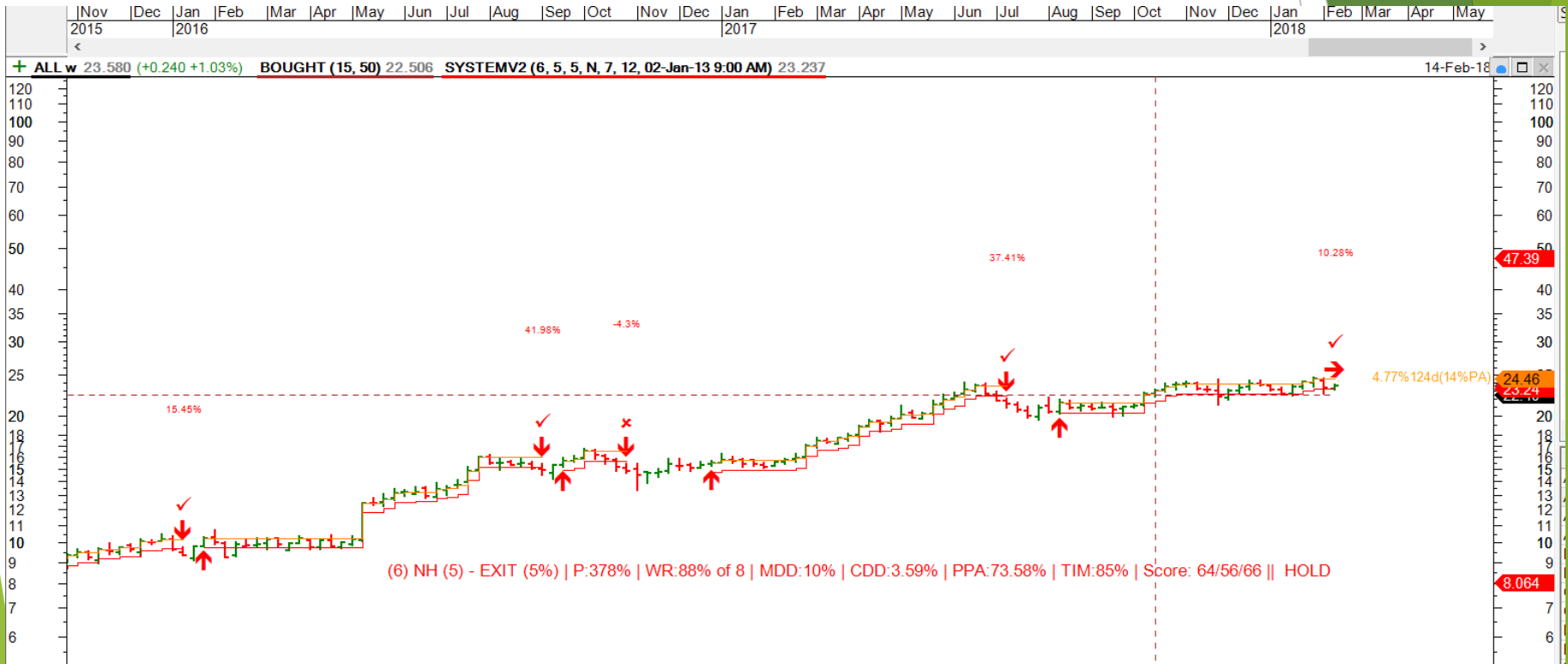
Example 0

New High Entry 52 - Exit 7/12 Crossover (Peter Castle)



Example 1

New High Entry 5 - S/L 5% from high



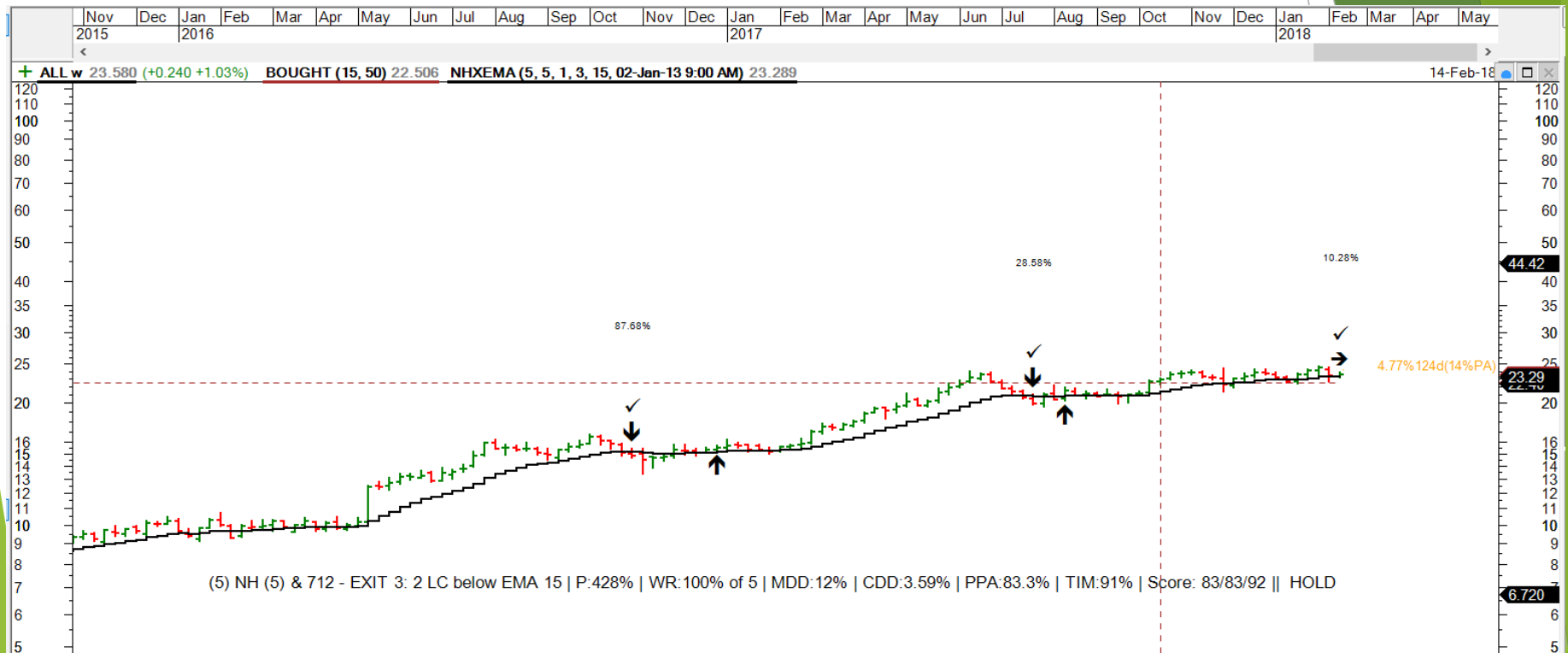
Example 2

New High Entry 5 - S/L 1.3 ATR



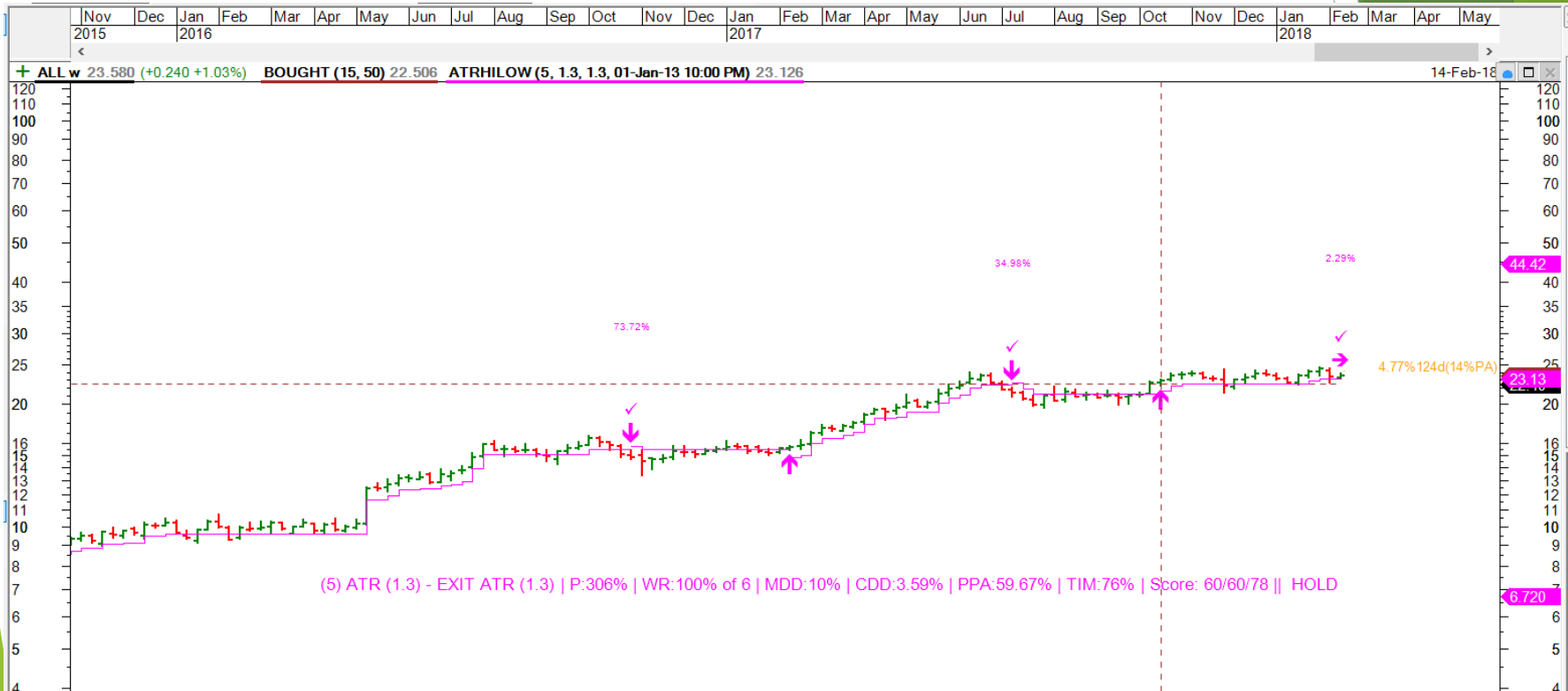
Example 3

New High Entry 5 - S/L EMA 15



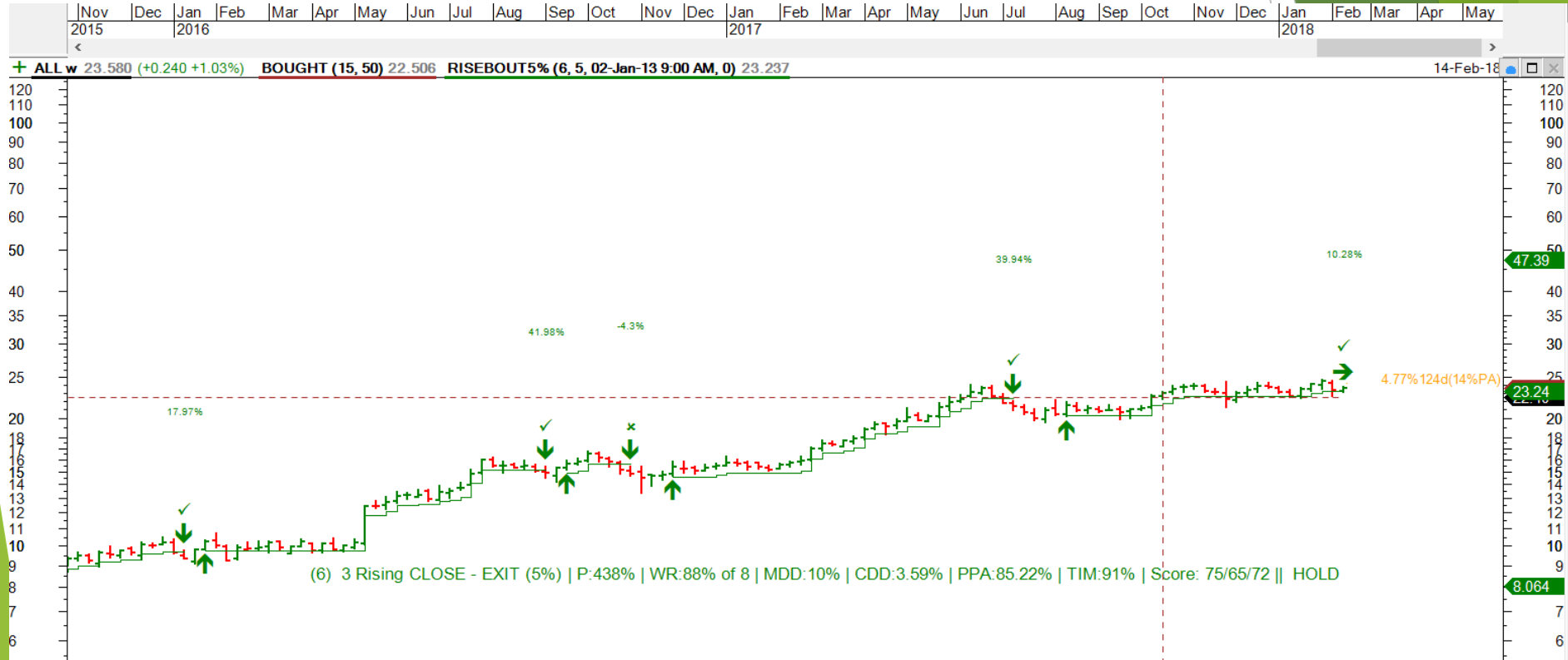
Example 4

Entry 1.3 ATR - Exit 1.3 ATR



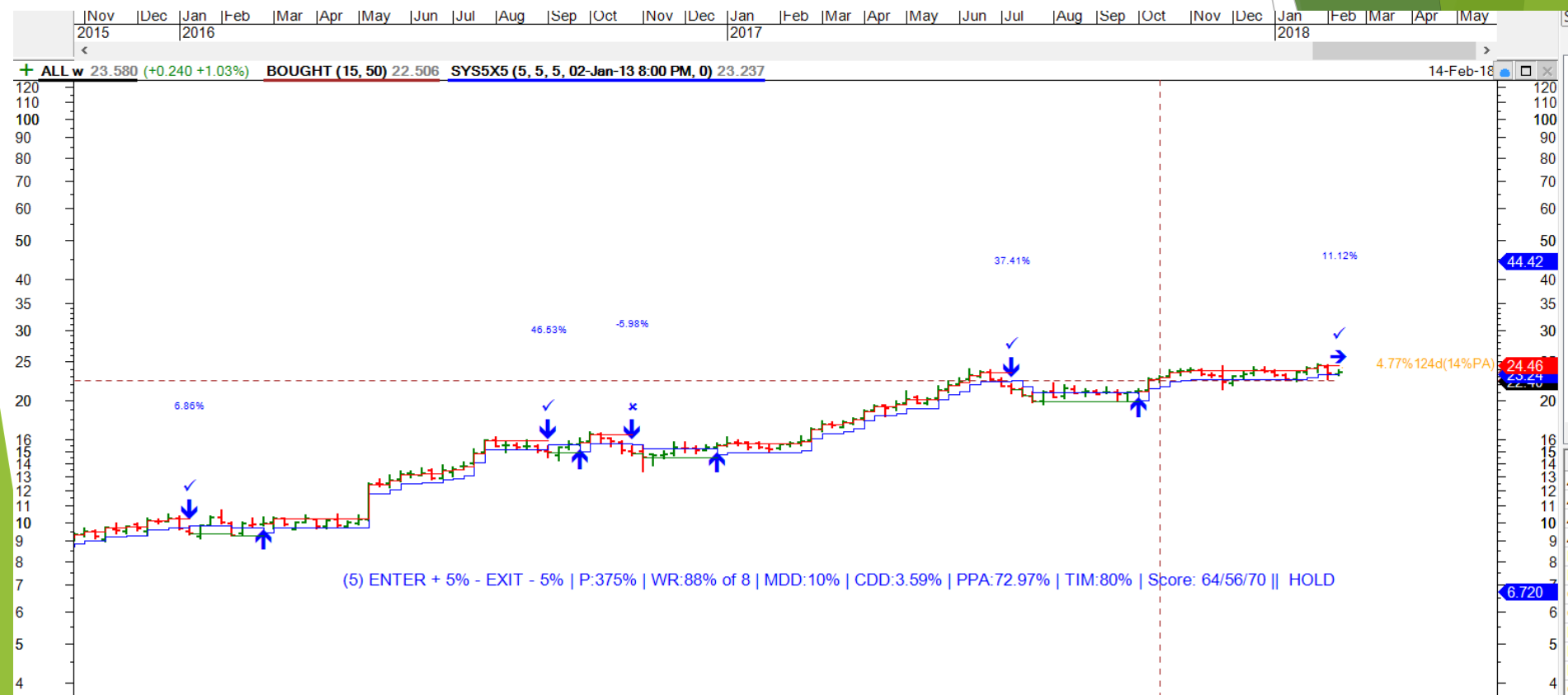
Example 5

Entry High Close 3 - Exit S/L 5% from High



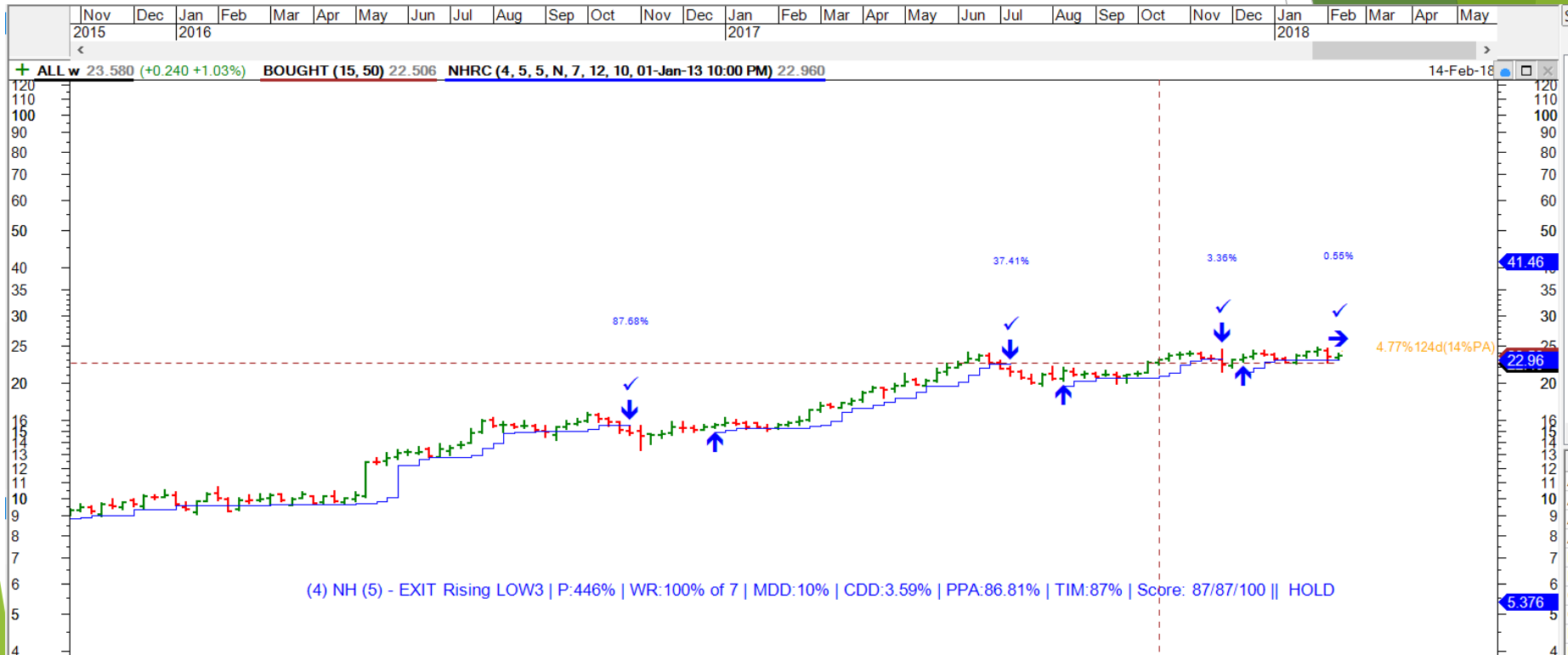
Example 6

Entry +5% Rising from Low - Exit S/L 5% from High



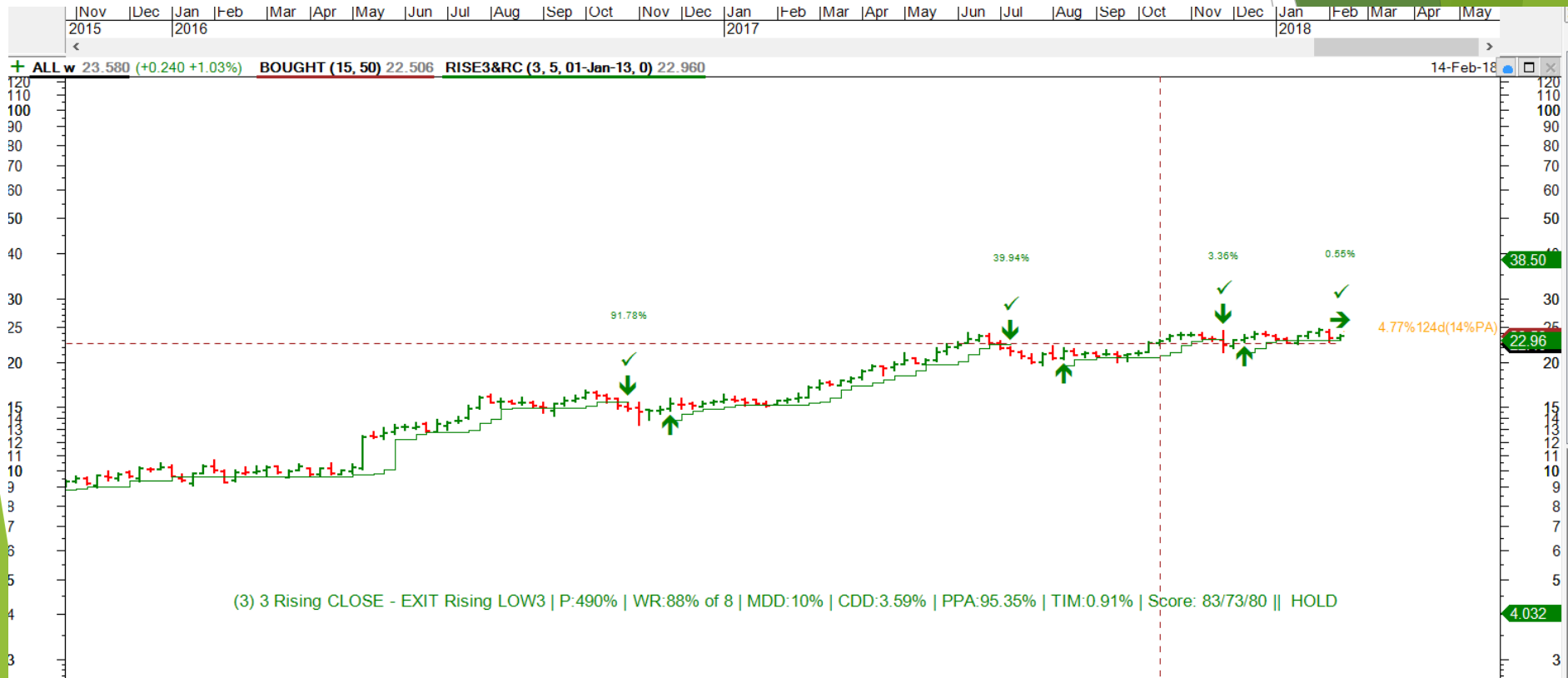
Example 7

Entry New High 5 - Exit Rising Low 3



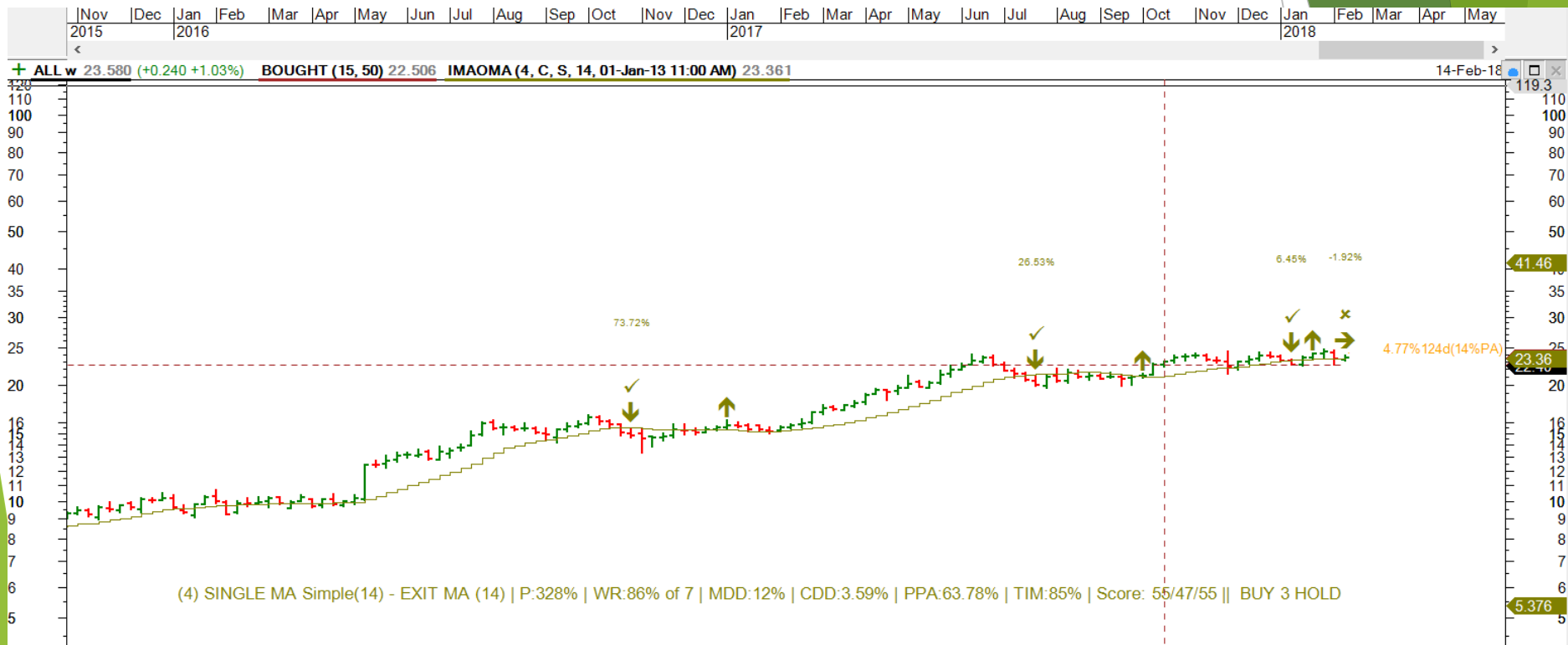
Example 8

Entry High Close 3 - Exit Rising Low 3



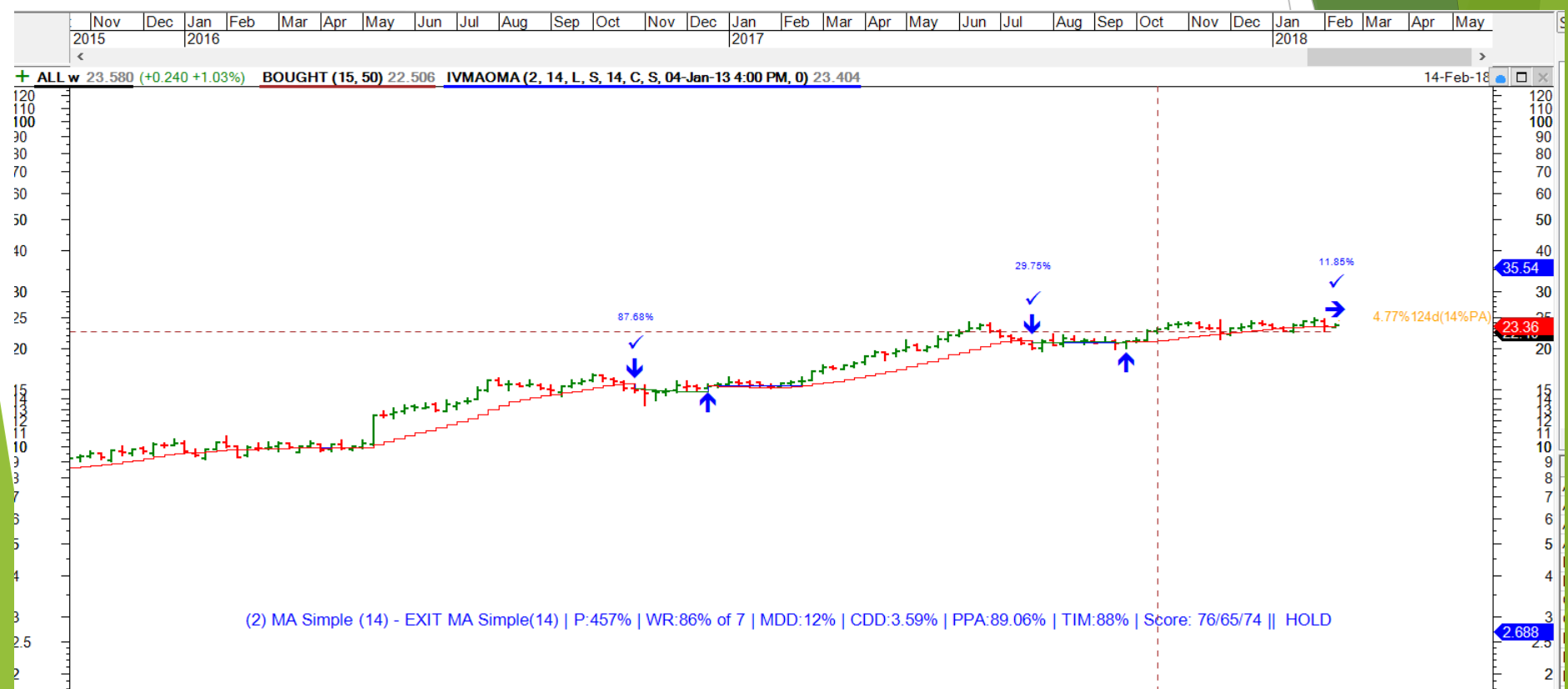
Example 9 (very simple)

Entry above SMA(C)14 - Exit Below SMA(C)14



Example 10 (very simple)

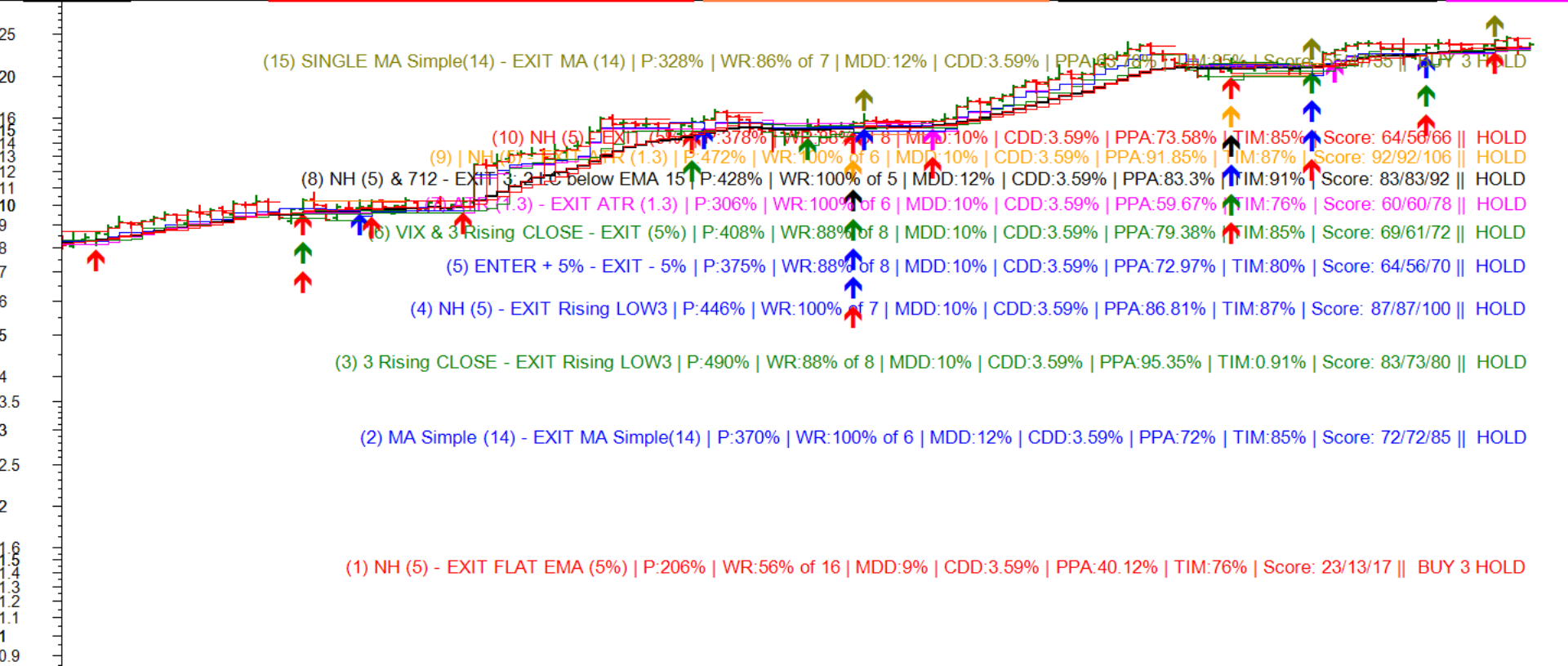
Entry above SMA(L)14 - Exit Below SMA(C)14
 Small change - big difference - mmmm?



TAKE YOUR PICK

2015 | Sep | Oct | Nov | Dec | 2016 | Jan | Feb | Mar | Apr | May | Jun | Jul | Aug | 2017 | Sep | Oct | Nov | Dec | Jan | Feb | Mar | Apr | May | Jun | Jul | Aug | 2018 | Sep | Oct | Nov | Dec | Jan | Feb |

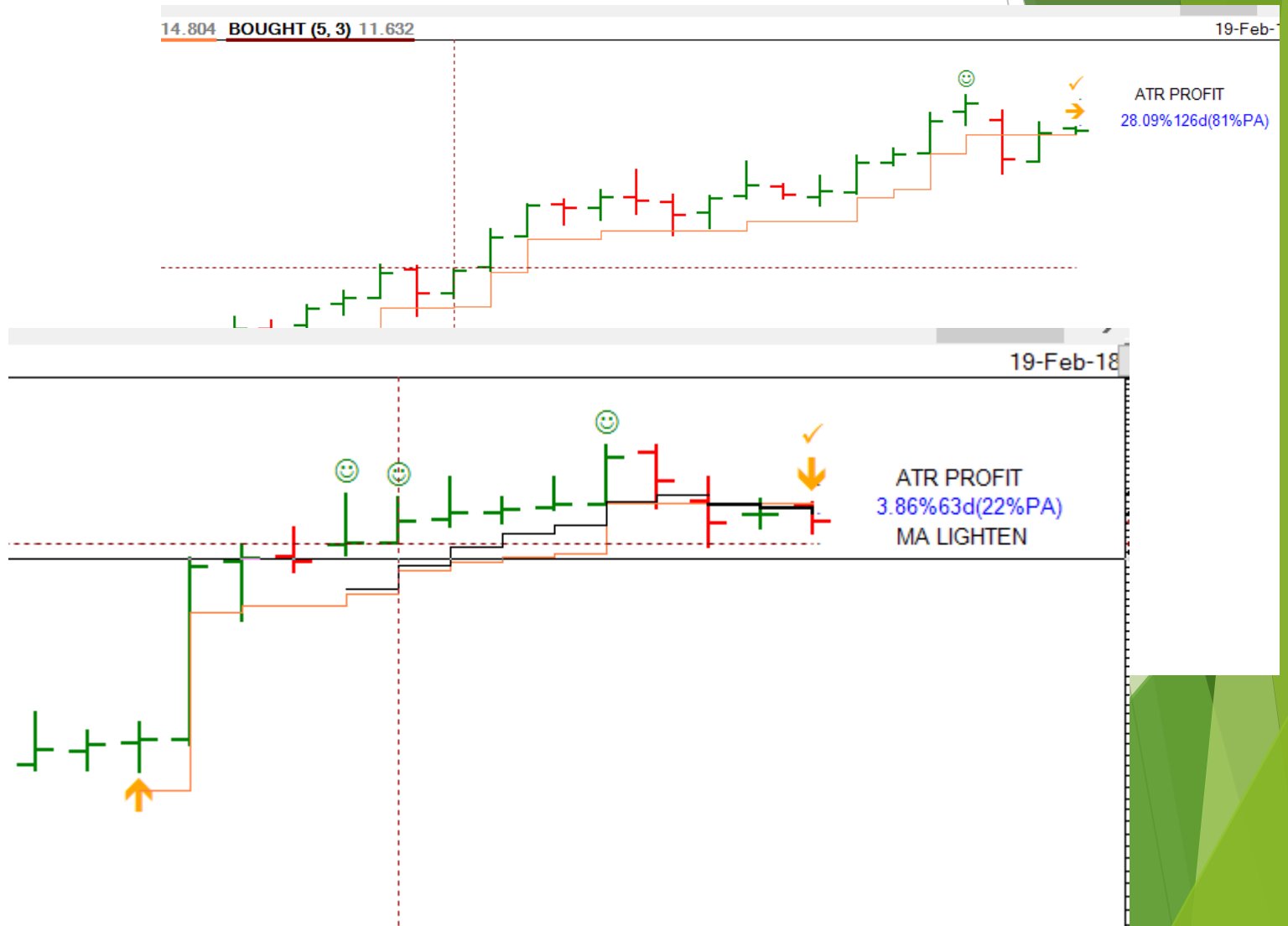
ALL w 23.580 (+0.240 +1.03%) | **SYSTEMV2 (10, 5, 5, N, 7, 12, 02-Jan-13 9:00 AM) 23.237** | **NHXATR (9, 5, 02-Jan-13 9:00 AM, 1.3) 23.126** | **NHXEMA (8, 5, 1, 3, 15, 02-Jan-13 9:00 AM) 23.289** | **ATRHILOV 14-F**



Soft Exits

- ▶ If you wait for Hard Exit, you often give a lot back
- ▶ Look to anticipate when momentum lessens
- ▶ Take profit before you are forced to exit
- ▶ Watch for Close above $3 \times \text{ATR}$ - topping behaviour?
- ▶ AND / OR FLAT EMA

Profit Take Advisory



Putting it together - my way

- ▶ Select a strategy of your choice
- ▶ Scan for up trending stocks on WMD timeframes
- ▶ Scan for stocks that fit this chosen strategy
- ▶ Do the numbers and compare scores
- ▶ Look for stocks which have just generated an entry signal (in past couple of weeks - I use 5 periods)
- ▶ Select & Buy - look at Soft Exit Signal
- ▶ Monitor for exit (Indicator gives instruction)

SUMMARY

- ▶ This methodology helps me
- ▶ More back testing can be done
- ▶ More strategies to explore - your thoughts
- ▶ Please tell me parameters that work best for you
- ▶ All Bull Chart script freely available
 - ▶ Email me - des@bleakley.com.au

LOOK AT STOCKS?

QUESTIONS?