

# **Disclaimer**

**All the information and analysis provided herein is general in nature and for educational purposes only and does not constitute financial advice. No content in any way implies a recommendation to buy, sell, hold or short sell any financial instrument, nor is it financial advice.**

**Investing and trading in financial markets carries considerable risk, and should always be done in consultation with a licensed financial adviser taking your personal circumstances, financial situation, objectives and needs into consideration.**

***The information provided on this presentation is no substitute for financial advice.***

# BC Support Meeting 20/04/2016.

**Wyckoff Method in Australian Market.**

**By Kazim(Kaz) Agaoglu CFTe.**

**Diploma TA ATAA.**

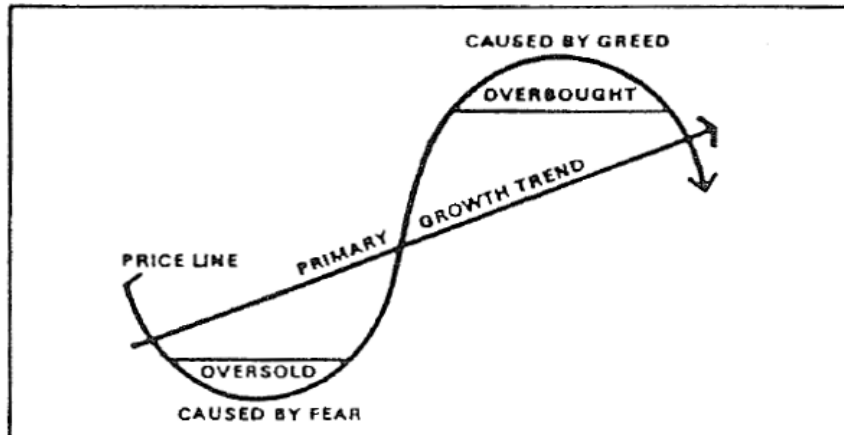
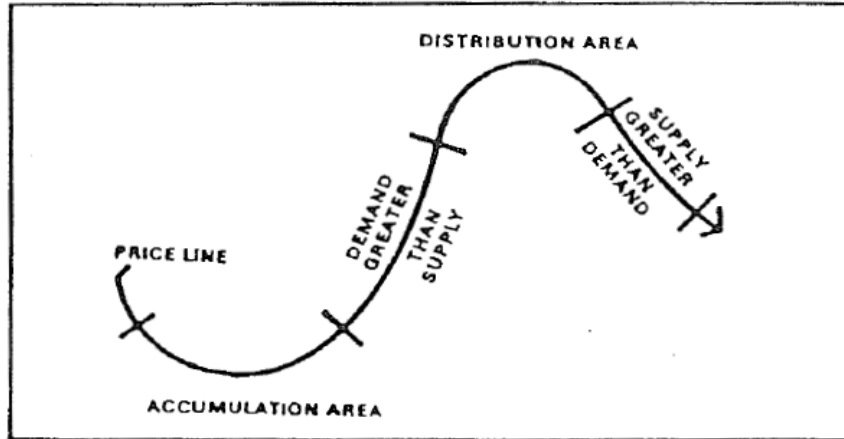
**Life long student of TA.**

**[Email : info@thecharttechnician.com.au](mailto:info@thecharttechnician.com.au)**

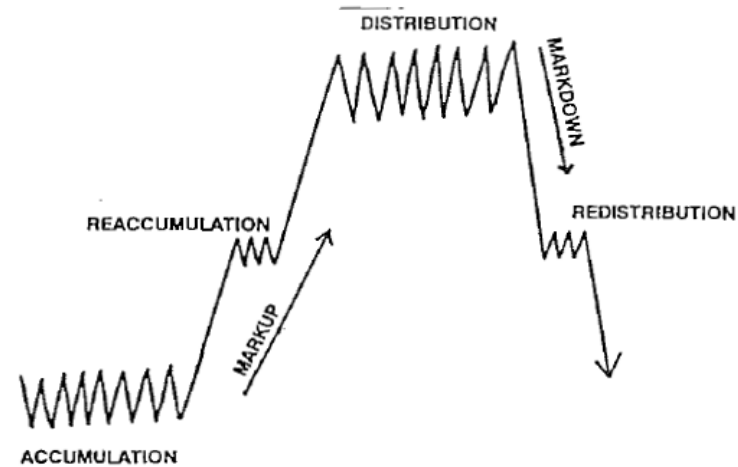
**[Web : thecharttechnician.com.au](http://thecharttechnician.com.au)**

# Primary Growth Trend Duration ( Up To 2 Years)

Idealized Cycle



Conception of Primary Market Phases



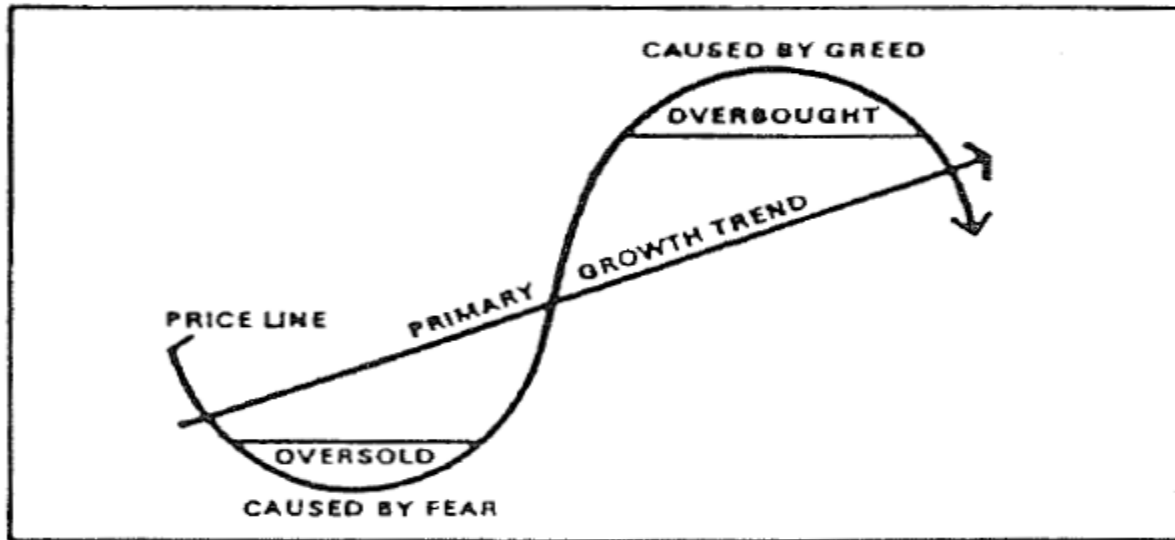
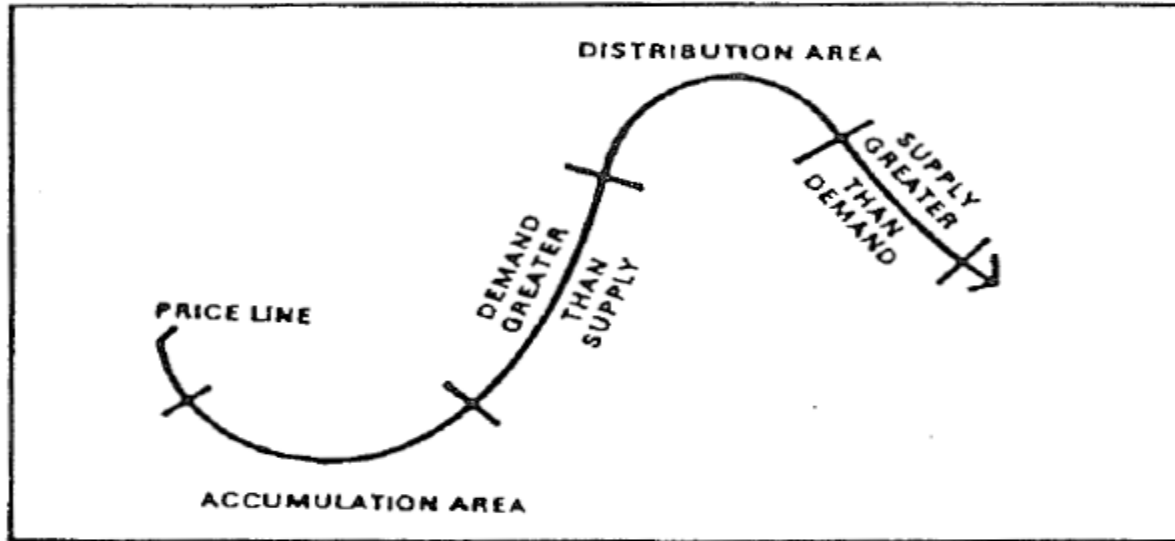
Accumulation: The establishment of an investment or speculative position by professional interests in anticipation of an advance in price.

Markup: A sustained upward price movement.

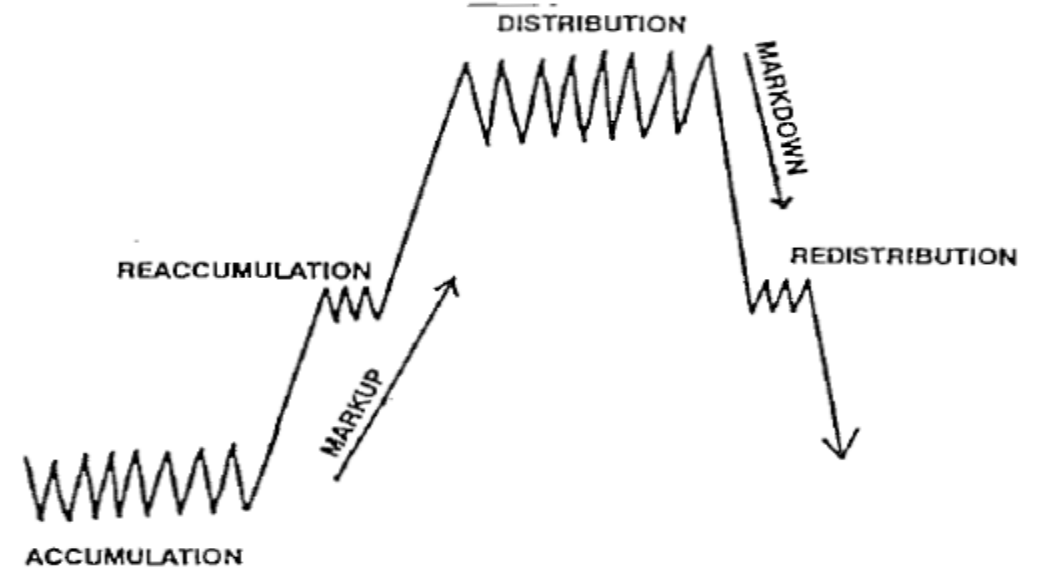
Distribution: the elimination of a long investment or speculative position.

Markdown: A sustained downward price movement.

## Idealized Cycle



## Conception of Primary Market Phases



**Accumulation:** The establishment of an investment or speculative position by professional interests in anticipation of an advance in price.

**Markup:** A sustained upward price movement.

**Distribution:** the elimination of a long investment or speculative position.

**Markdown:** A sustained downward price movement.

# Trend in Motion Remains in Motion until Proven Otherwise

## BAP Weekly Chart with Wyckoff Demand & Overbought lines

### DEFINING our POSITION WITHIN A MAJOR UPTREND

Lowering TF to Daily for a potential entry

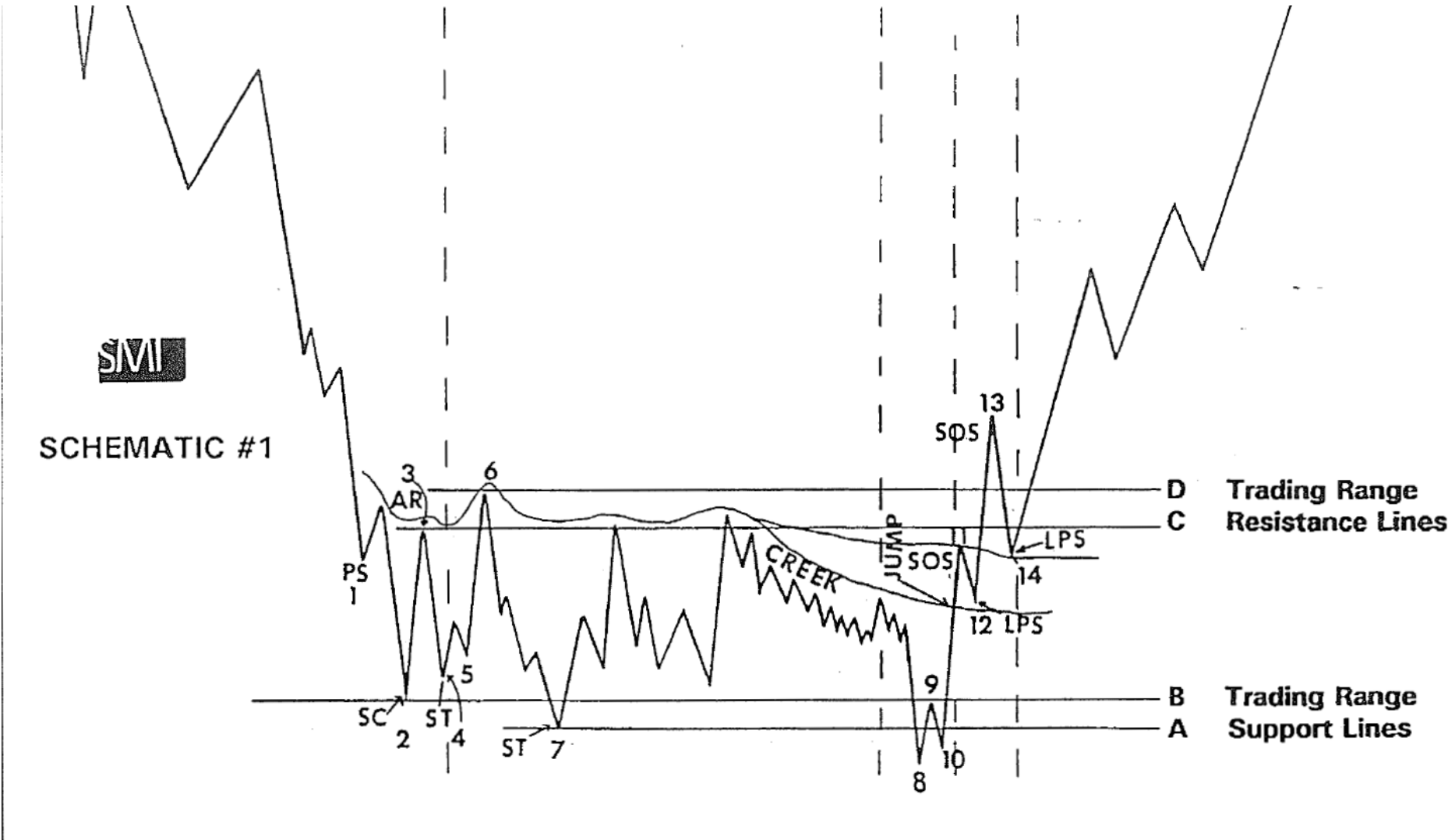


**HALT/STOP of a trend versus  
a TREND REVERSAL**

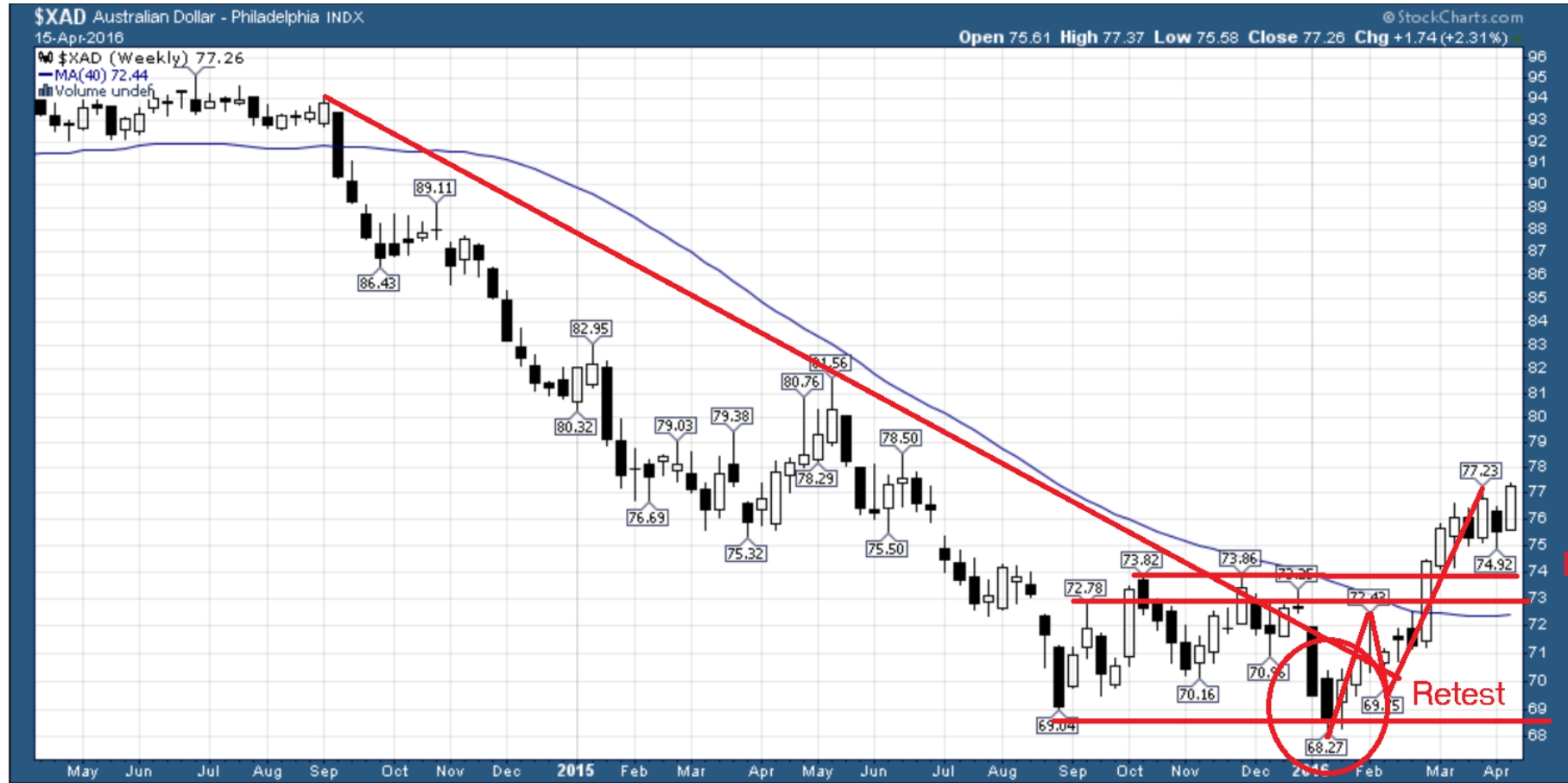
**CONTINUATION OR A REVERSAL,  
once we enter into a TR ?**

**Resolving The mystery of a Trading Range  
( TR) the WYCKOFF way.**

# Accumulation Schematic



# Aussie \$ ( XAD ) Weekly Chart Accumulation.



BU/LPS

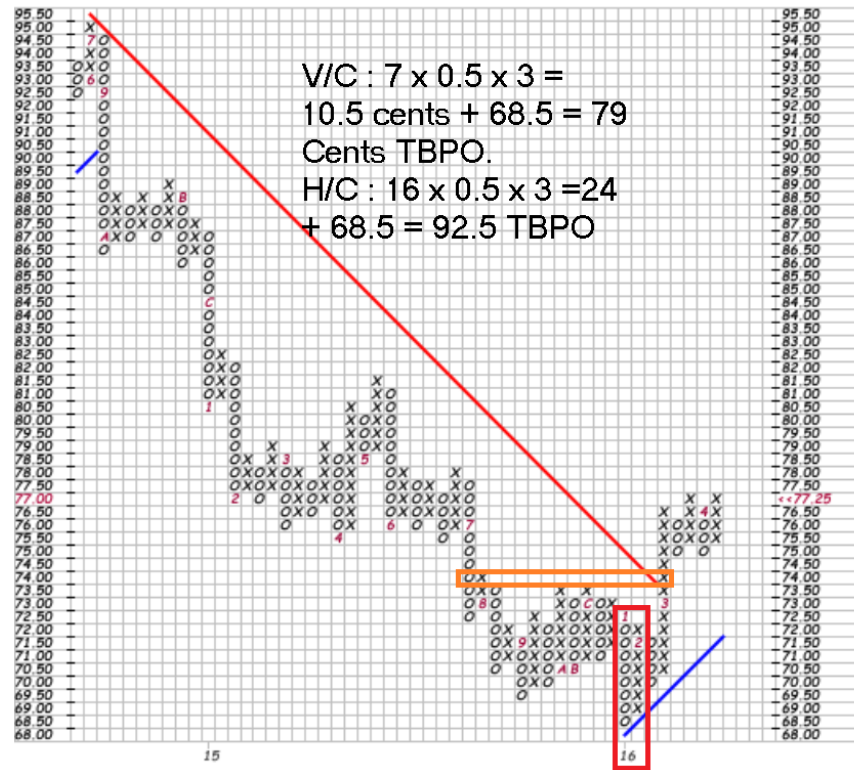
Retest



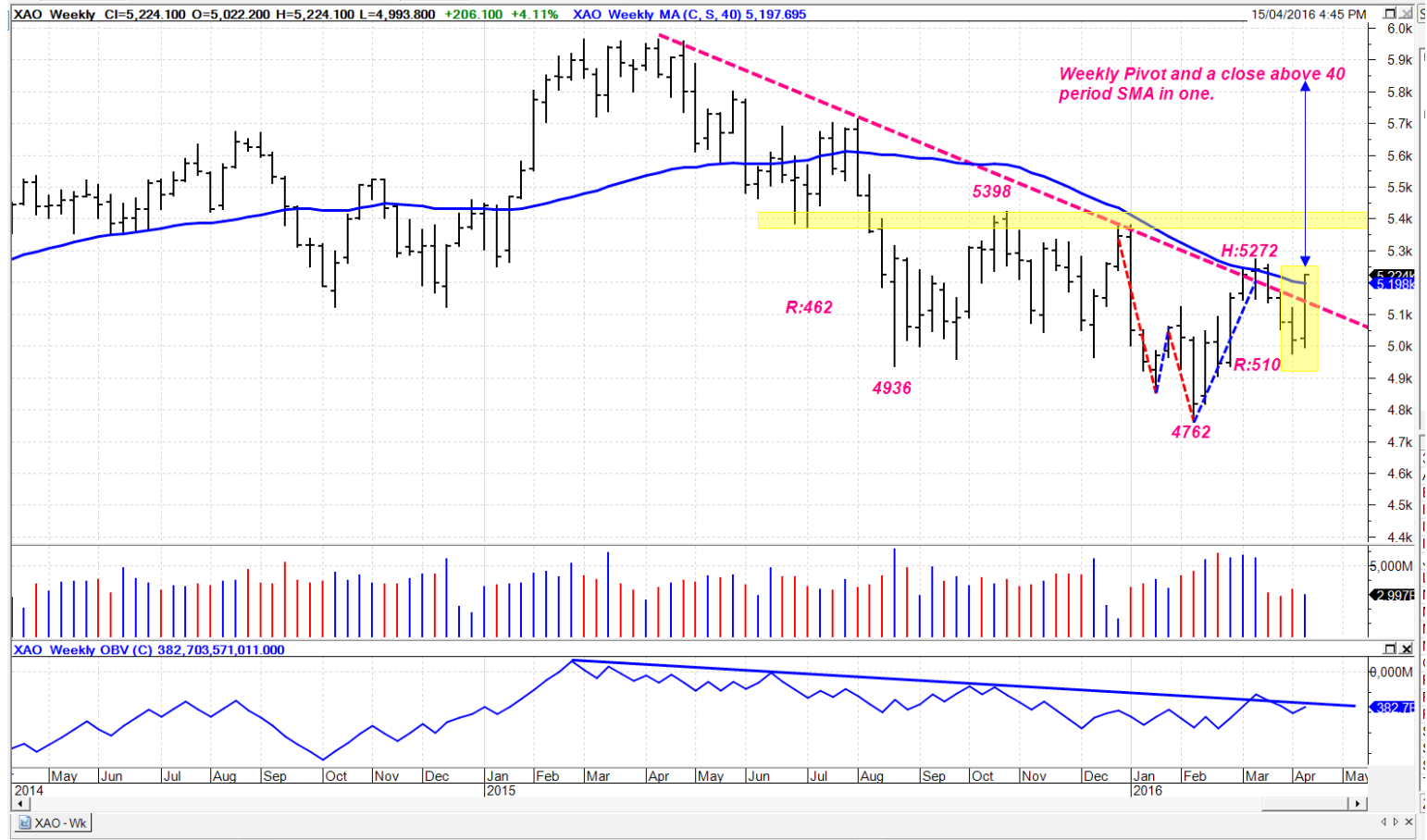
# Aussie \$ ( XAD) PnF Chart.

**\$XAD** Australian Dollar - Philadelphia INDX  
 15-Apr-2016, 16:00 ET, daily, O: 77.106, H: 77.34, L: 76.815, C: 77.256, Chg: +0.311 (0.40%)  
 No recent chart pattern found  
 User-Defined scaling: 3 box reversal, Box size:0.5

(c) StockCharts.com

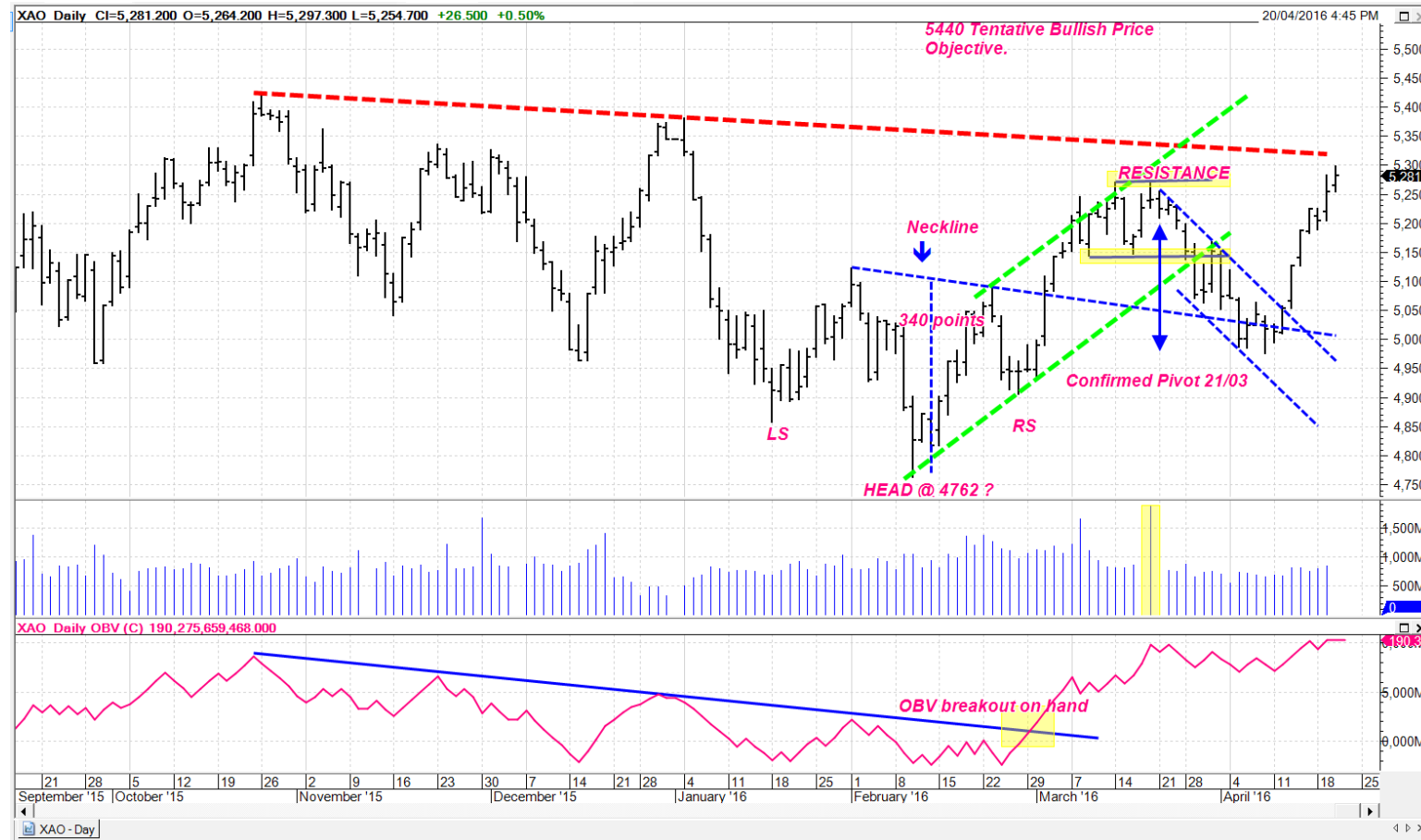


# XAO Weekly.





# Daily XAO as @ 17:00 update 20/04/2016.



# XAO April 2015 Top PnF Count.

**\$AORD** Australia ASX All Ords Composite (EOD) INDX

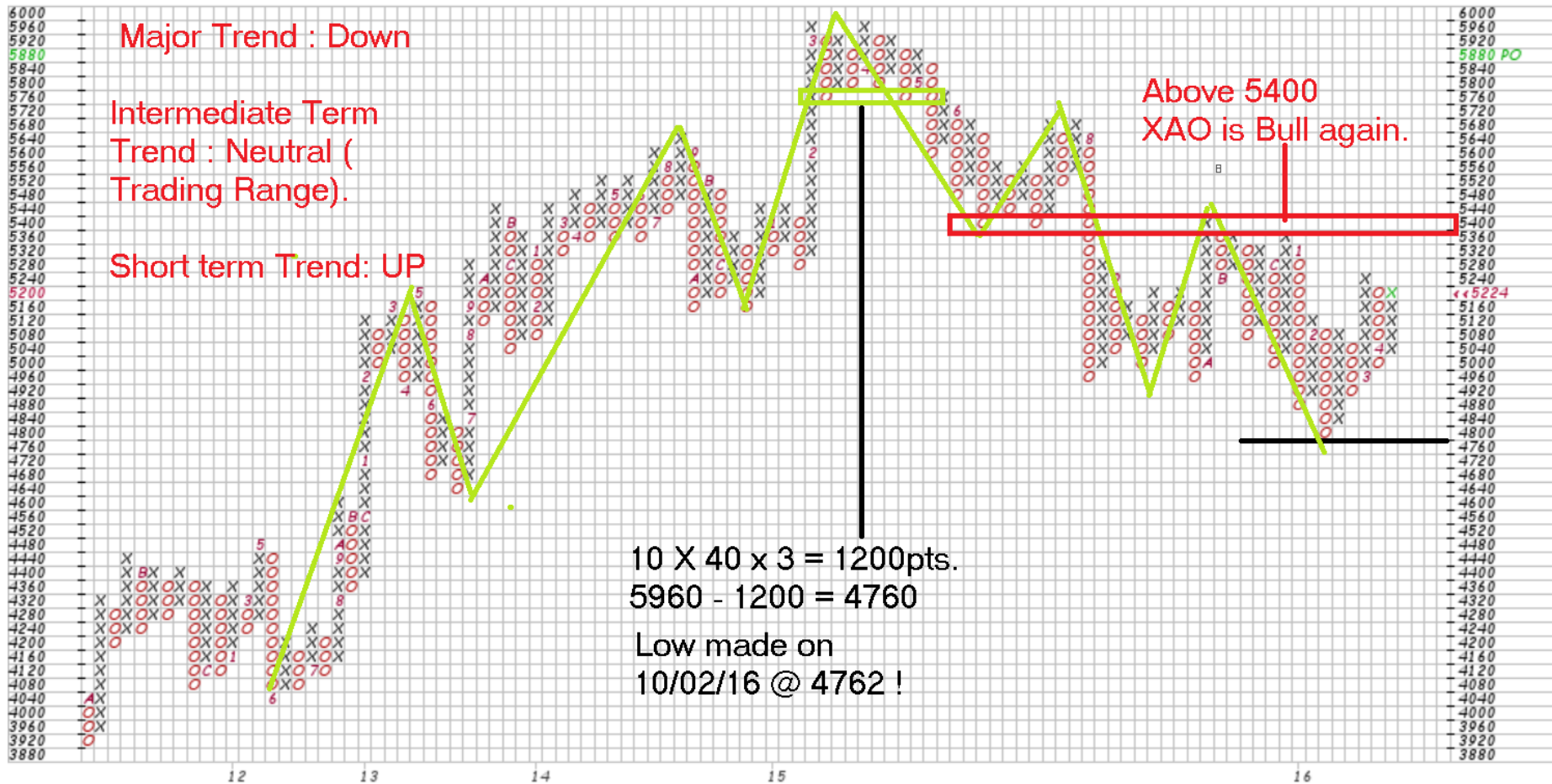
15-Apr-2016, 16:00 ET, daily, O: 5,187.60, H: 5,224.10, L: 5,182.30, C: 5,224.10, Chg: +36.40 (0.70%)

No recent chart pattern found

User-Defined scaling: 3 box reversal, Box size:40.0

Bullish Price Objective: 5880.0

(c) StockCharts.com



# XAO Tentative Bullish Price Objective from V/C

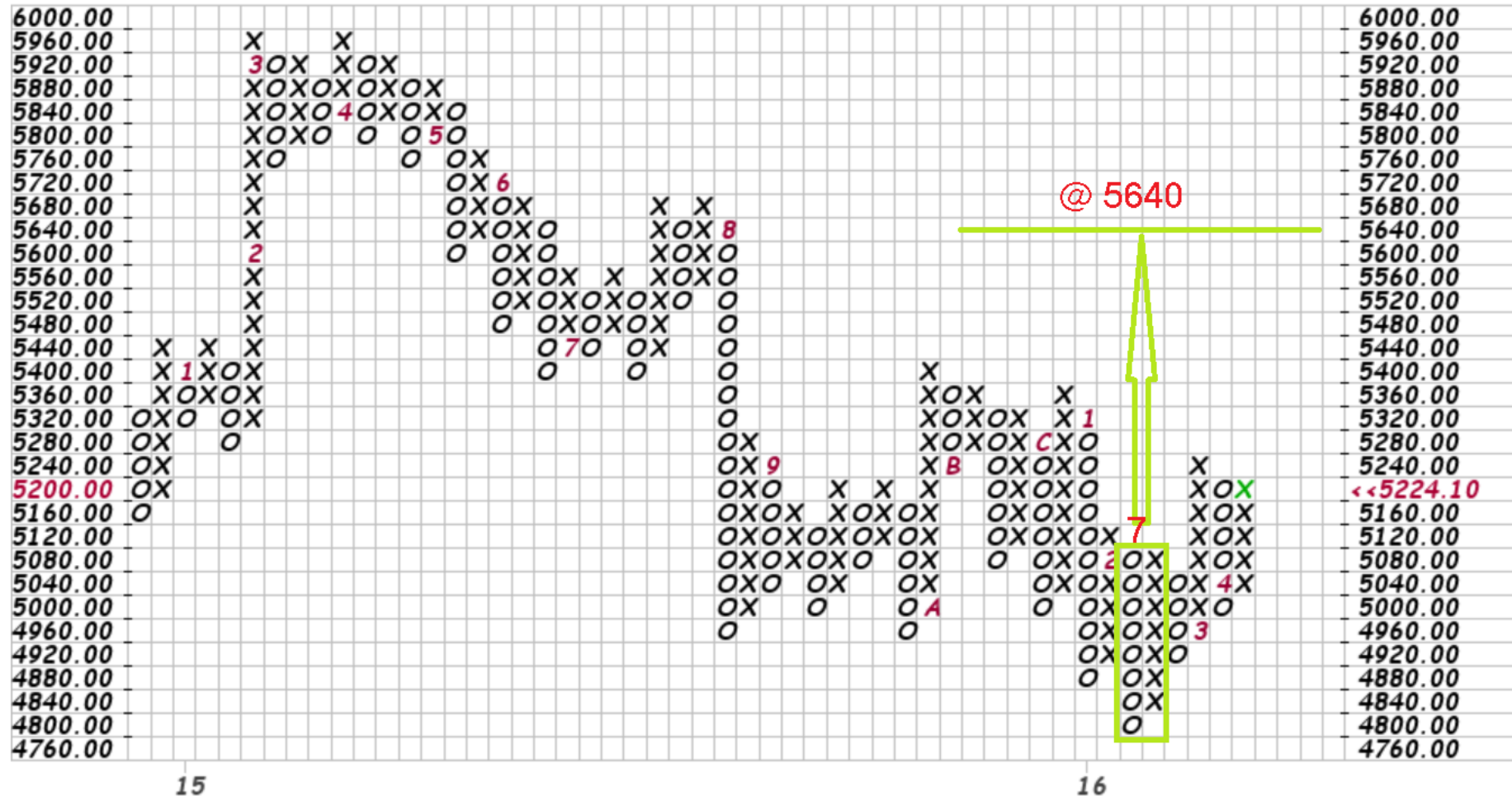
**\$AORD** Australia ASX All Ords Composite (EOD) INDX

15-Apr-2016, 16:00 ET, daily, O: 5,187.60, H: 5,224.10, L: 5,182.30, C: 5,224.10, Chg: +36.40 (0.70%)

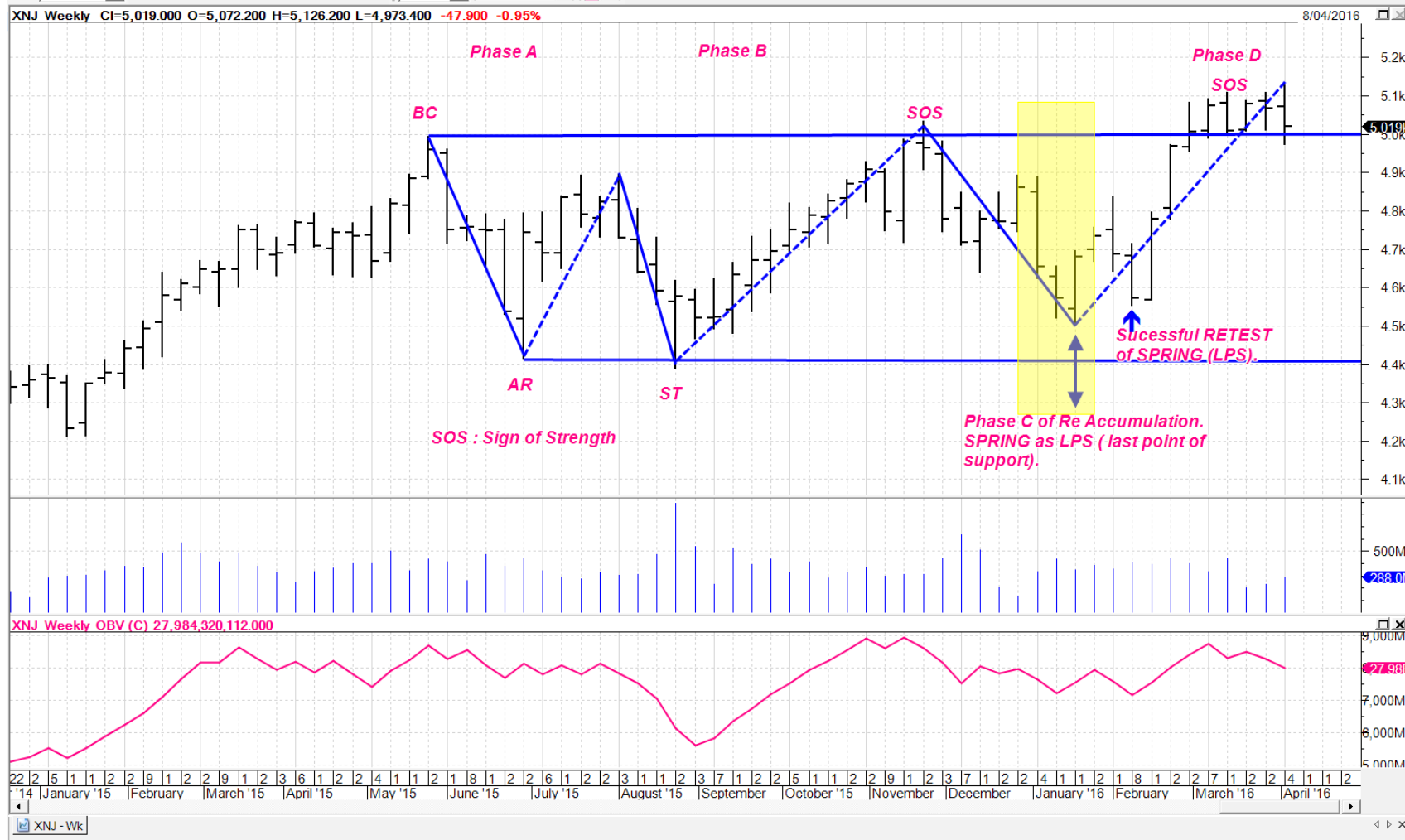
No recent chart pattern found

User-Defined scaling: 3 box reversal, Box size:40.0

(c) StockCharts.com



# XNJ Weekly Chart Wyckoff Method Re -Accumulation.



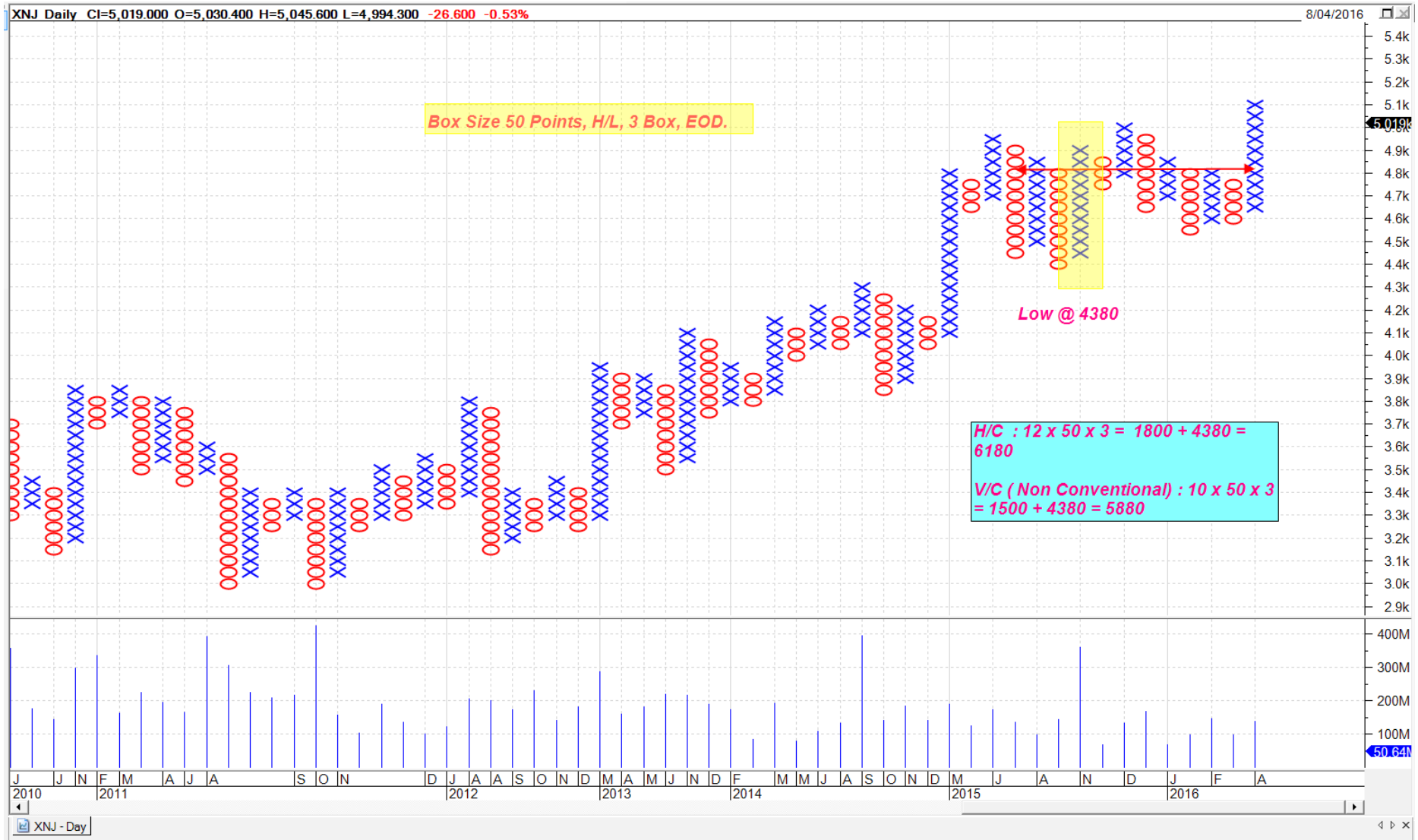


# XNJ Daily for fine tuning entry. JAC ( Jump Across the Creek) @ the break of the demand line after the RETEST.

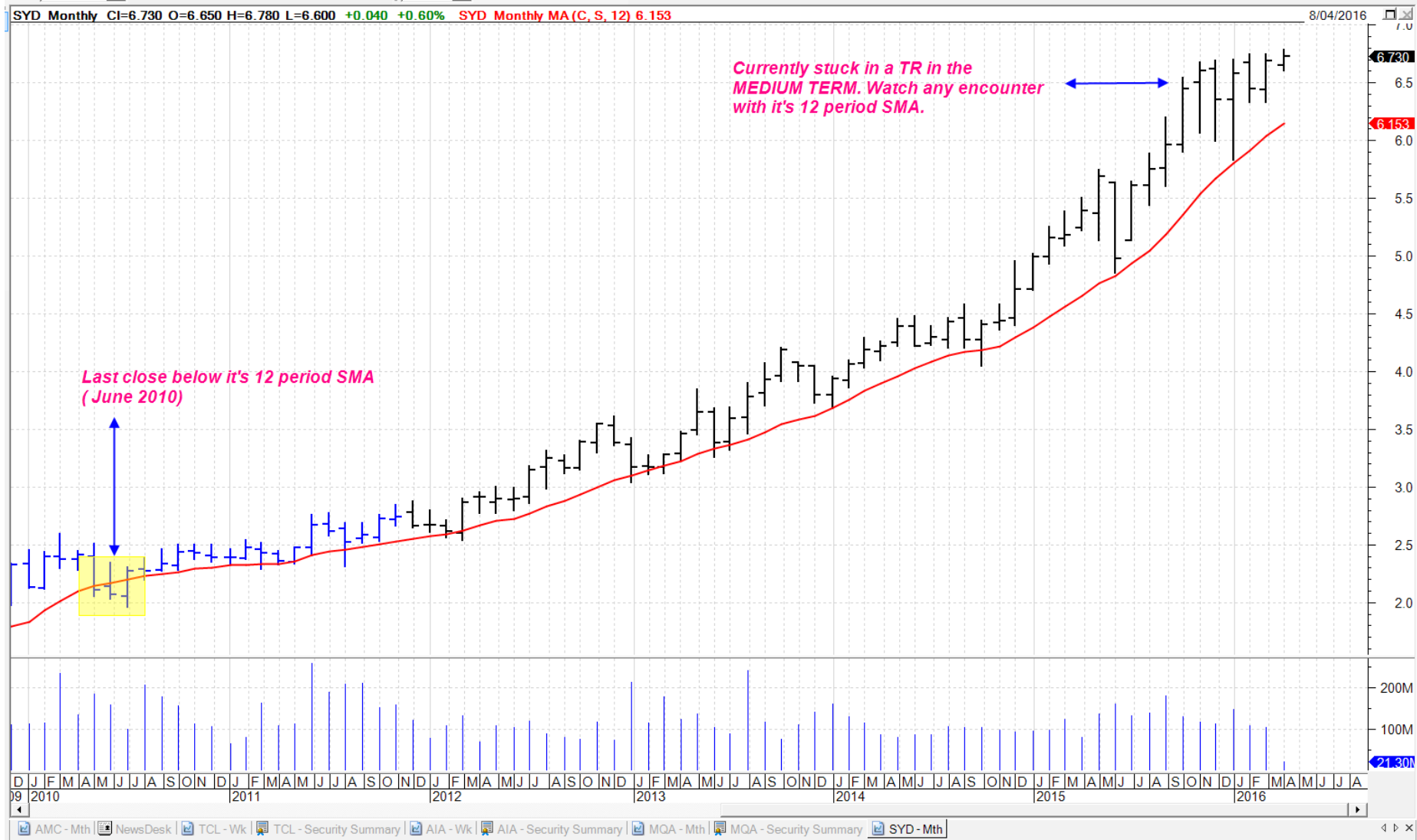




# XNJ PnF Chart.



# SYD Monthly.



# SYD PnF

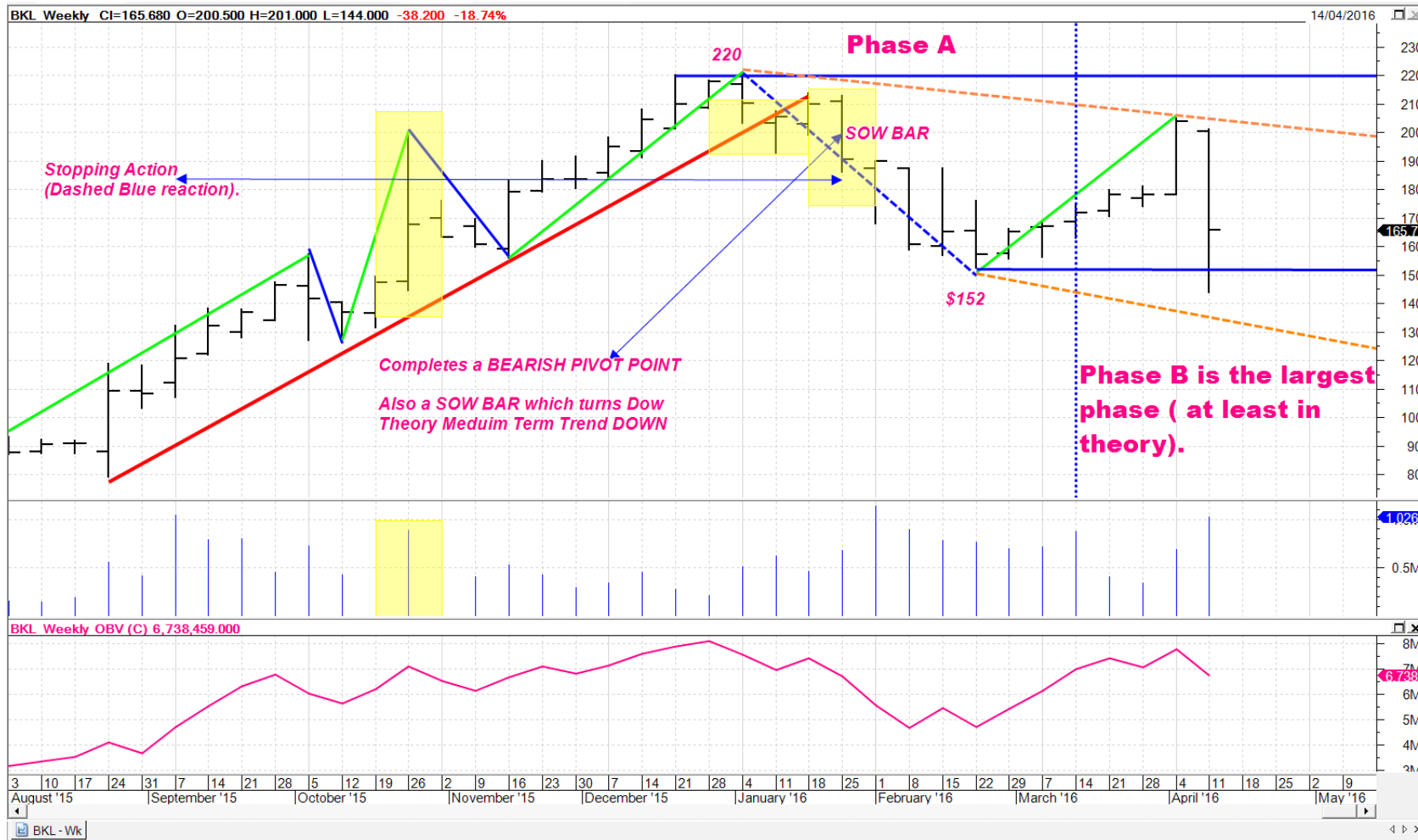




# MQG TOP



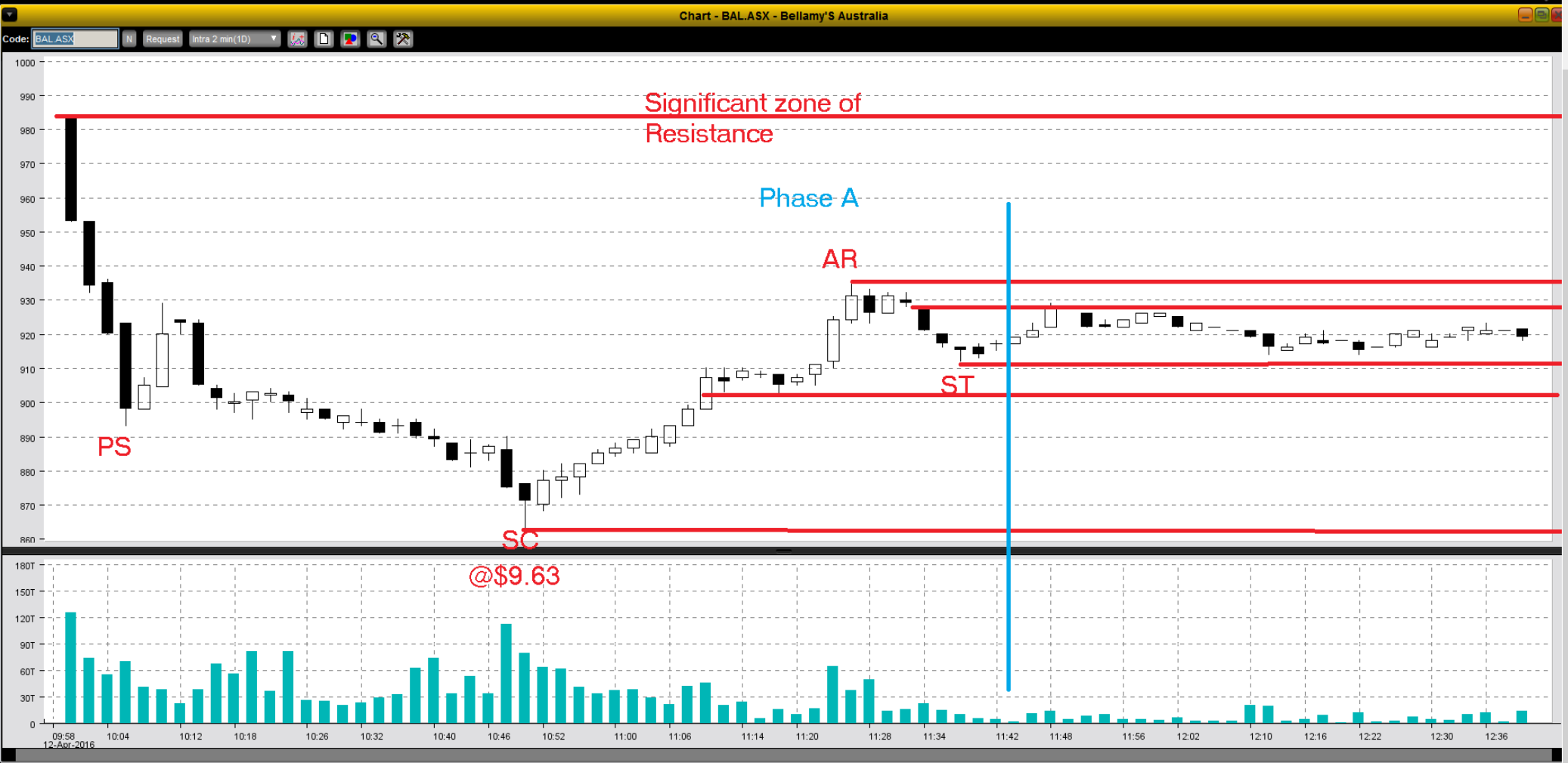
# BKL Weekly as @ 14/04/2016



# NSR Weekly Re Accumulation



# BAL 2 Minute Chart





**Attached is an electronic confirmation confirming that we have BOUGHT for you 1000 units in BELLAMY'S AUSTRALIA FPO at 8.850 on**

**Attached is an electronic confirmation confirming that we have SOLD for you 1000 units in BELLAMY'S AUSTRALIA FPO at 9.730 on**

**Risk 1 : Reward 3**

# VLC Entry & Exit.



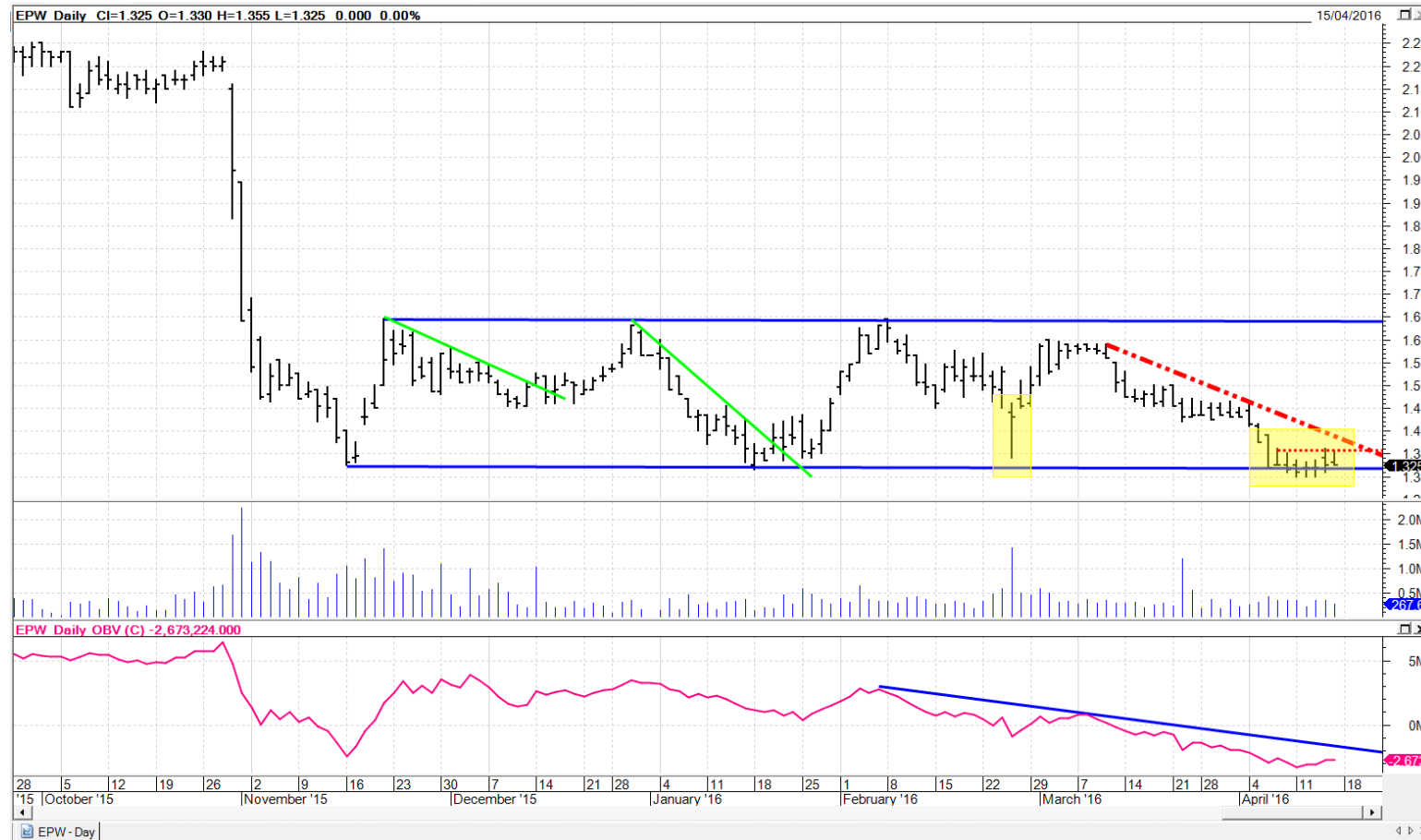
# VLC Trade.

## **RISK 1 : Reward 3**

Attached is an electronic confirmation confirming that we have BOUGHT for you 300 units in VNGD AUS LARGE ETF UNITS at 52.400 on Account

Attached is an electronic confirmation confirming that we have SOLD for you 300 units in VNGD AUS LARGE ETF UNITS at 54.600 on Account :

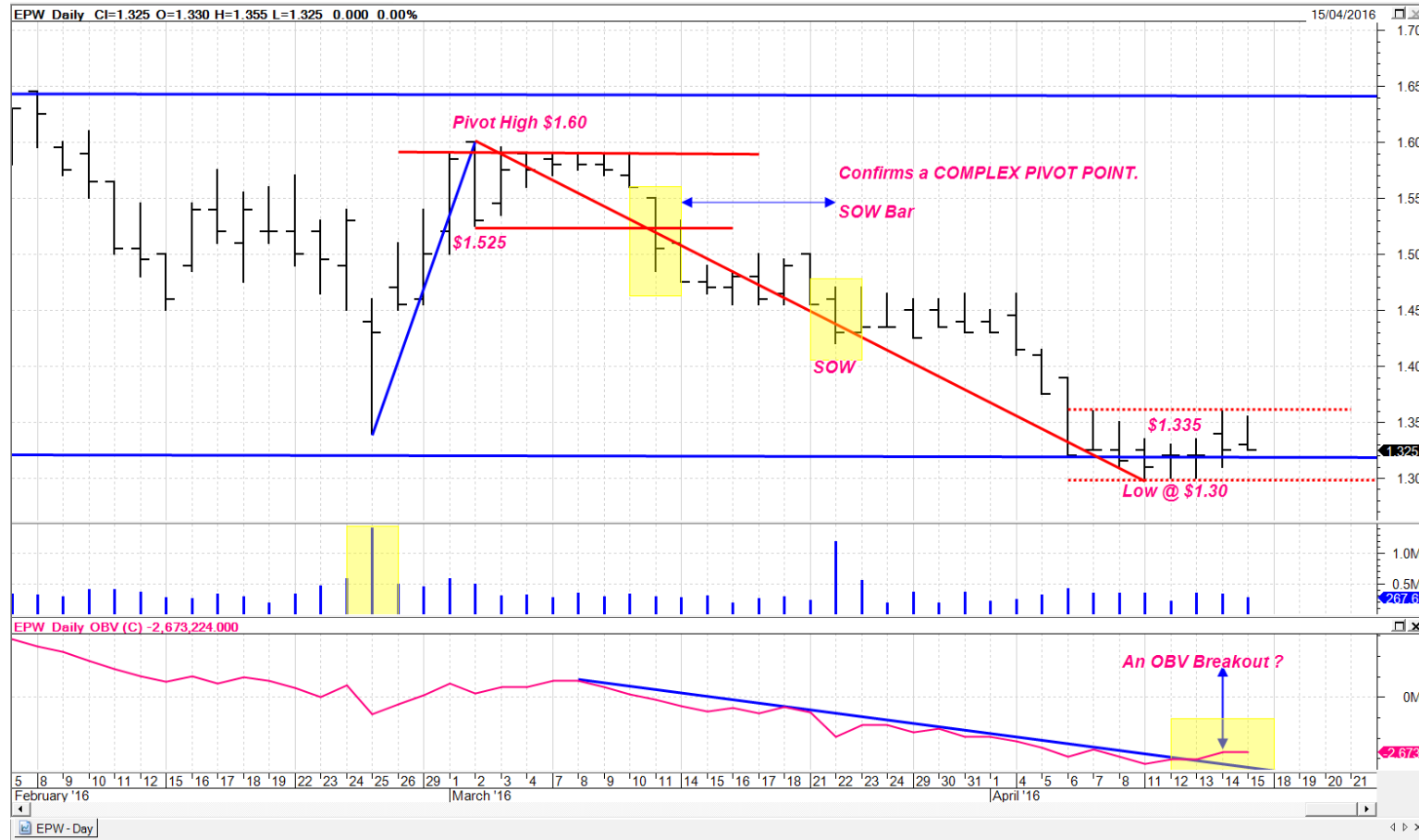
# EPW Daily, Potential Wyckoff Accumulation with Stopping Action confirmed.



# EPW Continued.



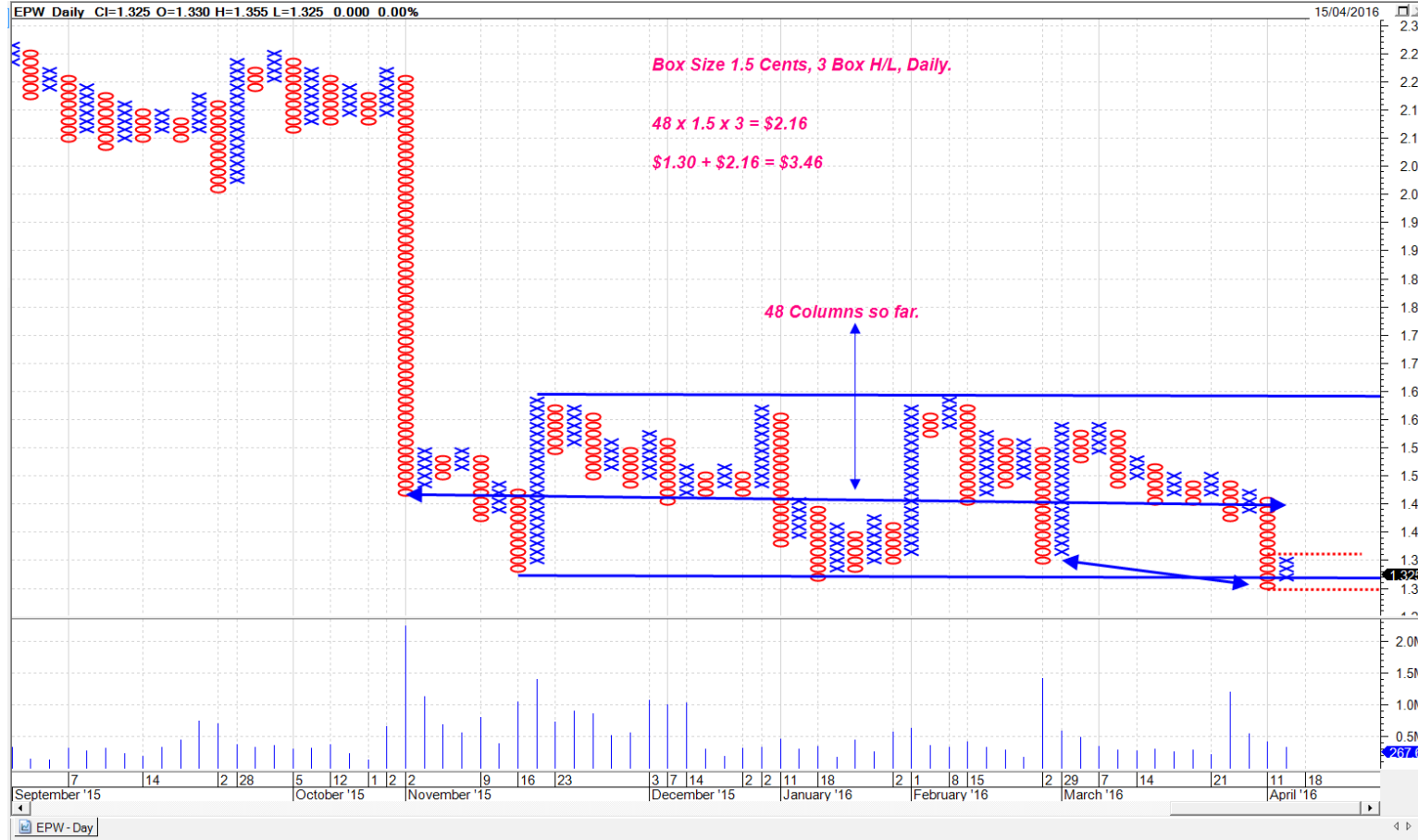
# EPW With Pivot Point.



# EPW in a MINI Trading Range within a downtrend. Which way the TR is likely to resolve itself ?



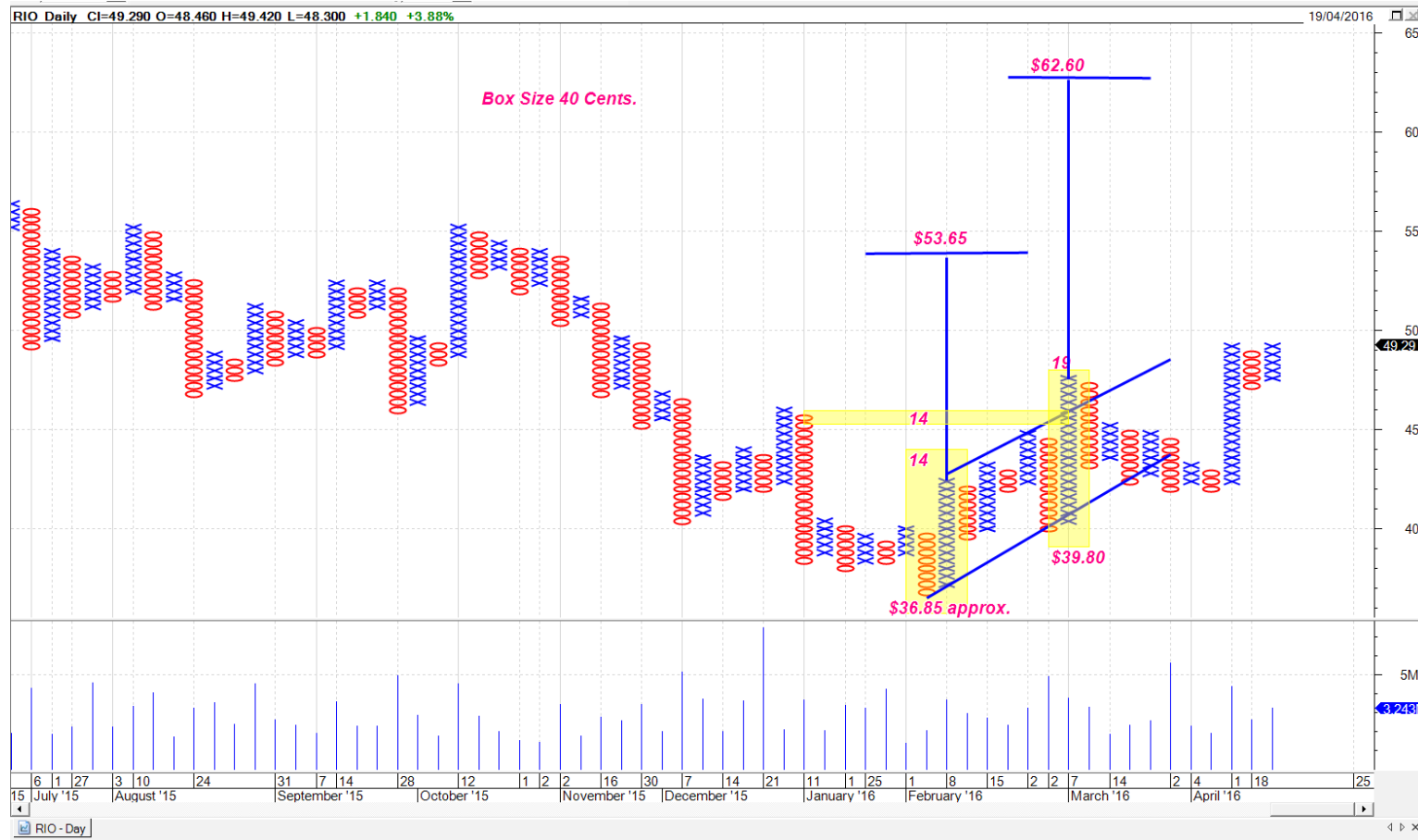
# EPW PnF Count, not active or valid as yet.



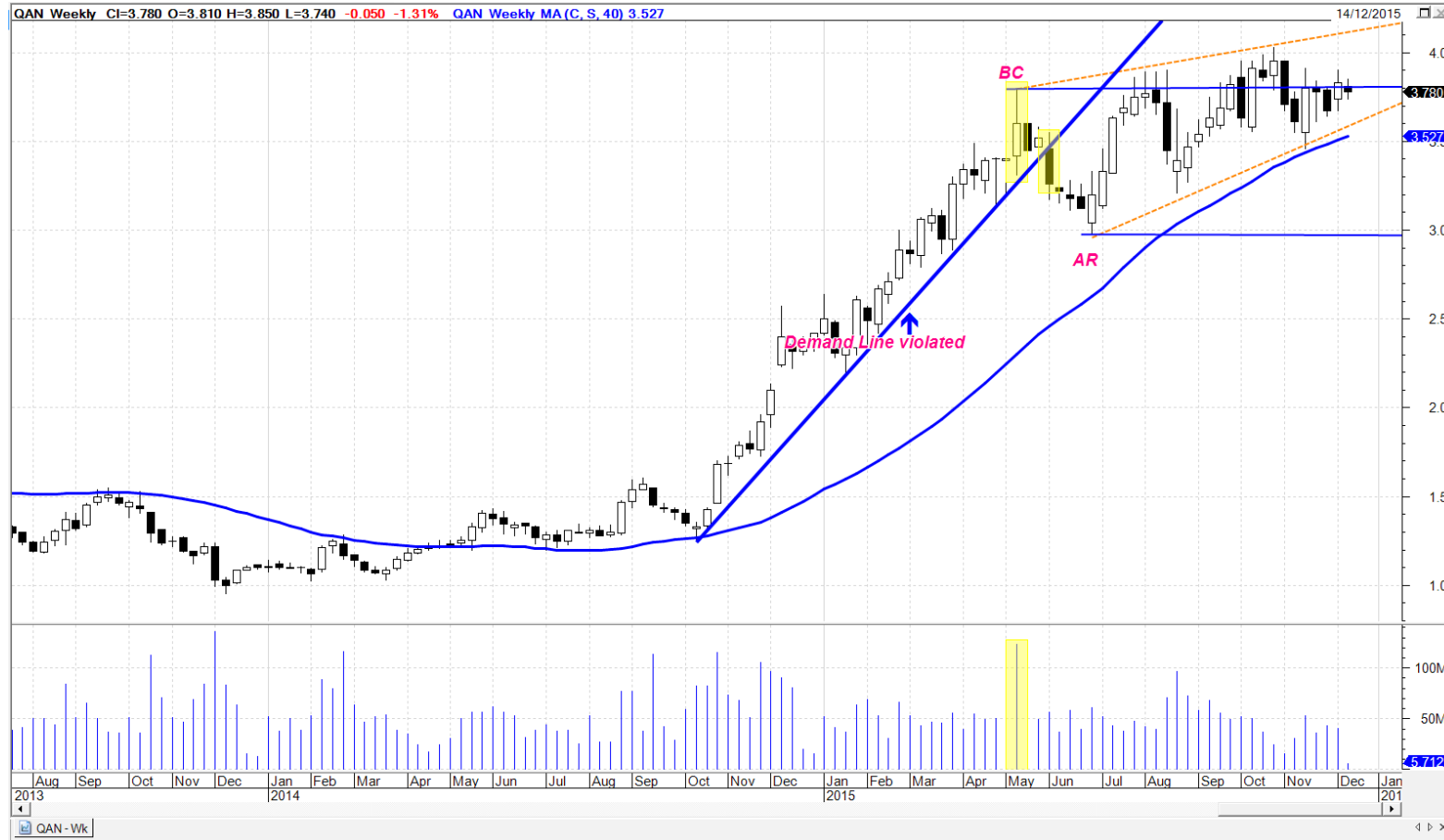




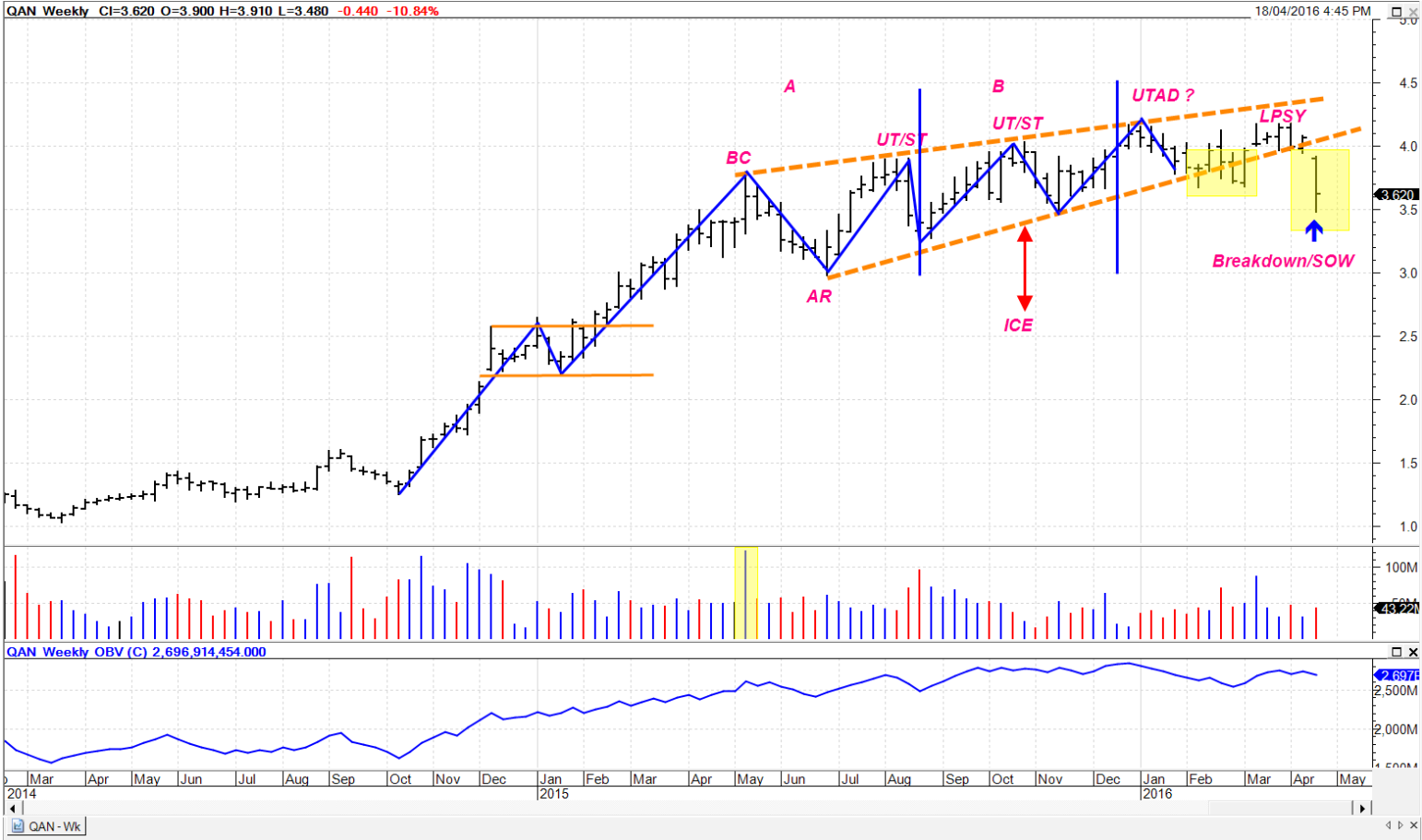
# Lets not forget RIO !



# The flying Kangaroo (QAN).



# QAN at present.



THANK YOU